

SCHOOL DISTRICT OF OSCEOLA COUNTY

ORGANIZATIONAL CHARTS

Office of the Superintendent

Legal Services

Chief of Staff & Strategy

Student Services

Human Resources

Community Relations

Oasis

Teaching, Learning, & Leading

Elementary Schools

Early Childhood Learning, Extended Learning, & 21st Century

Middle K8 Schools

High Schools

Educational Choices & Innovation

School Transformation

Curriculum & Instruction

Guidance Services

Career & Technical Education

Exceptional Student Education

Multicultural

Professional Learning



Revised 01.24.25

School District of Osceola County

Research, Evaluation, & Accountability

Facilities

Design & Construction

Planning Services

Fiscal Services

Budget

Finance

Grants Management

Risk & Benefits

Purchasing & Warehouse

Information Technology Services

Information Services

Media & Instructional Technology

Network & Information Security

Safety, Security, & Emergency Management

School Operations

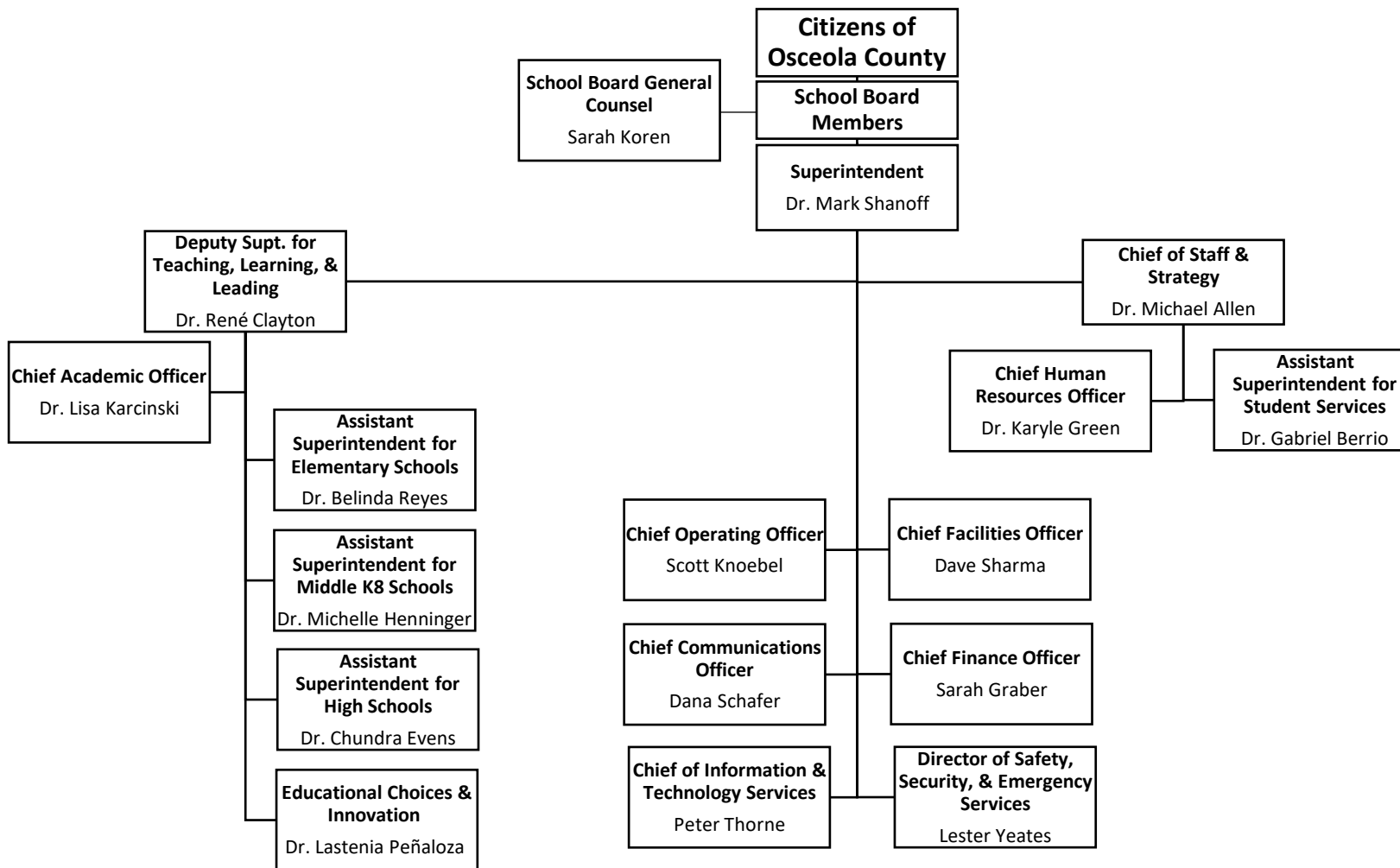
Centralized Custodial & Ancillary Services

Maintenance

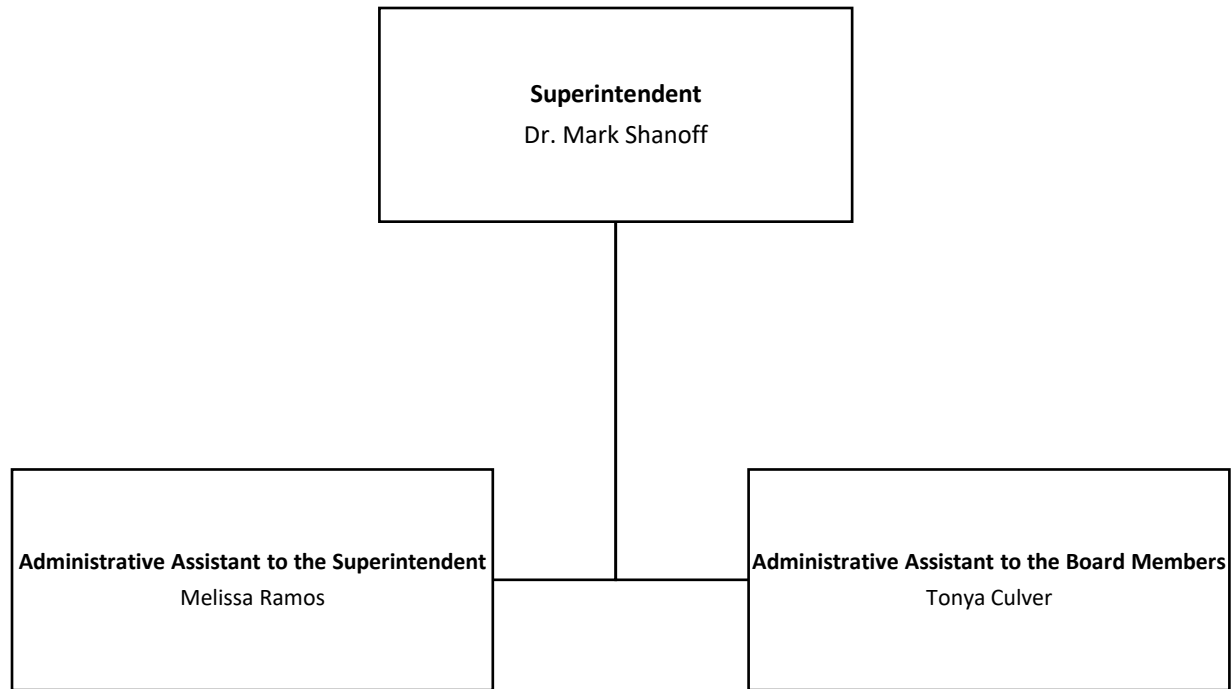
School Nutrition Services

Transportation

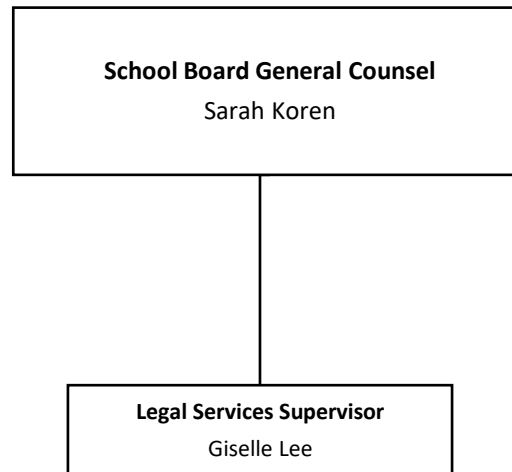




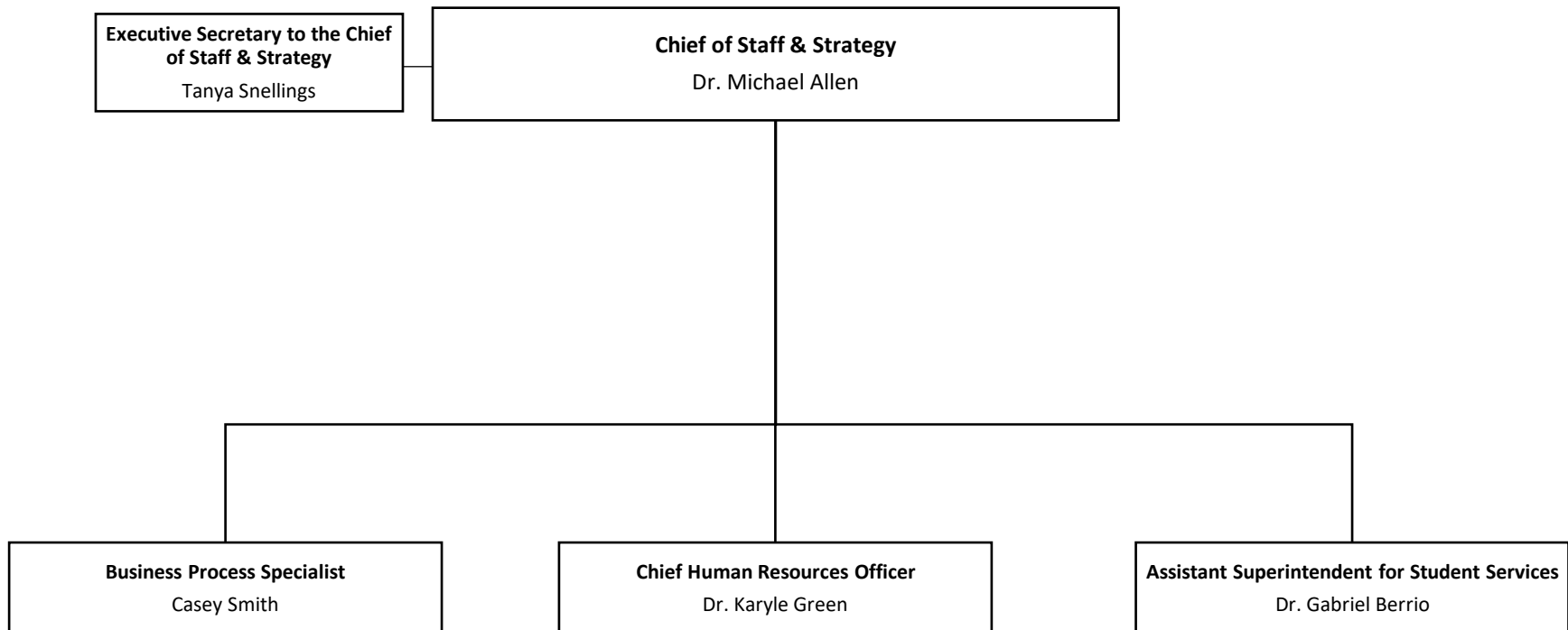
SUPERINTENDENT



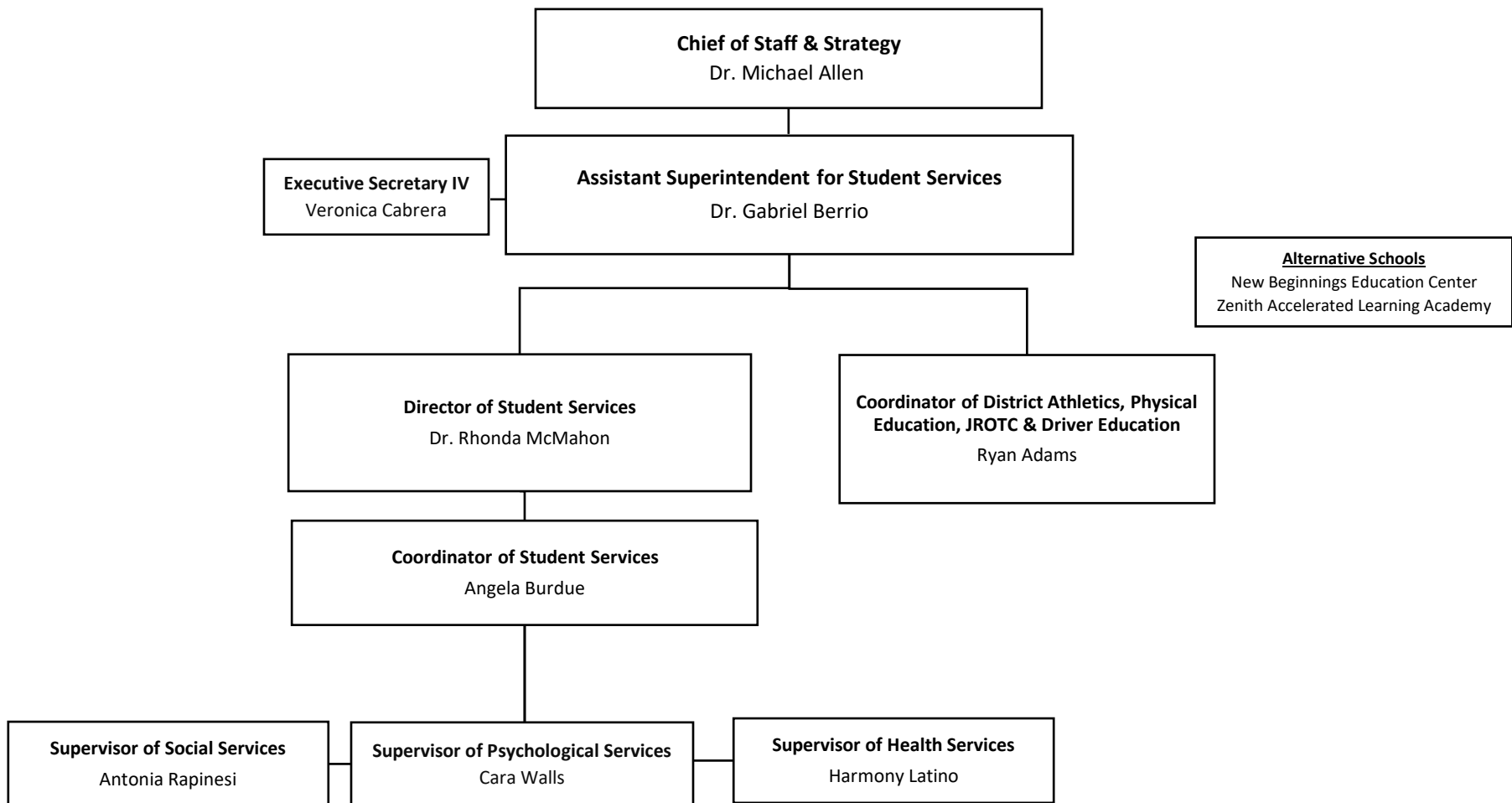
LEGAL SERVICES



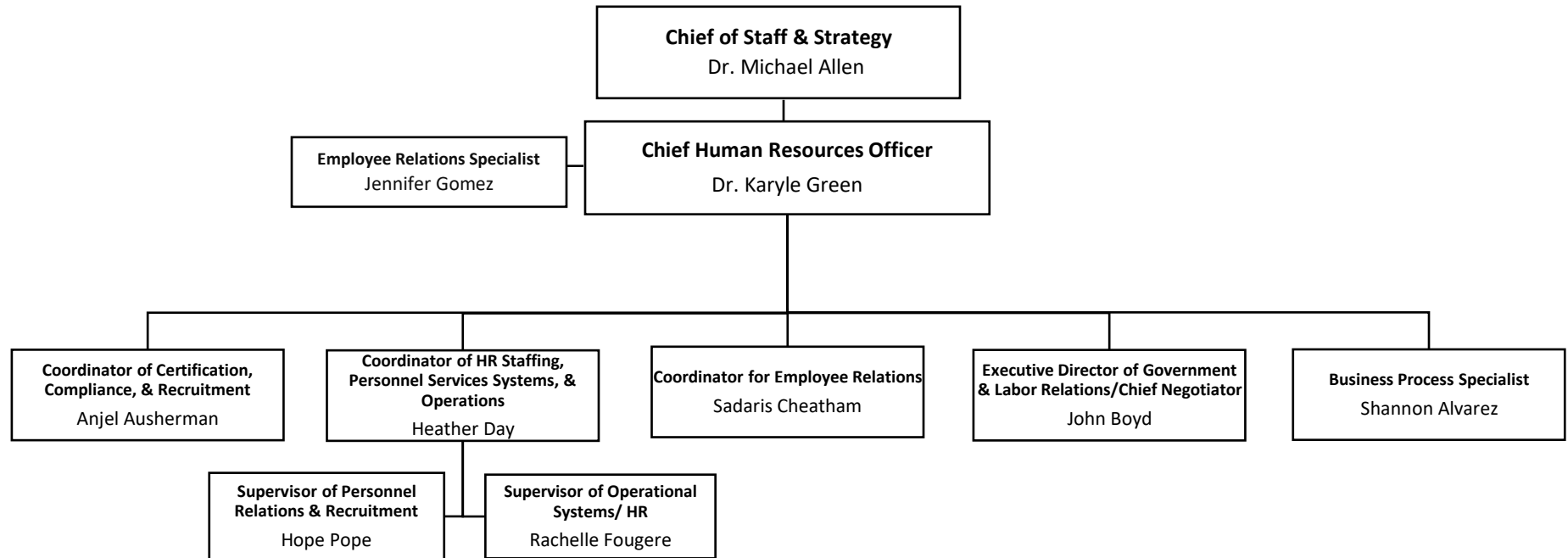
CHIEF OF STAFF & STRATEGY



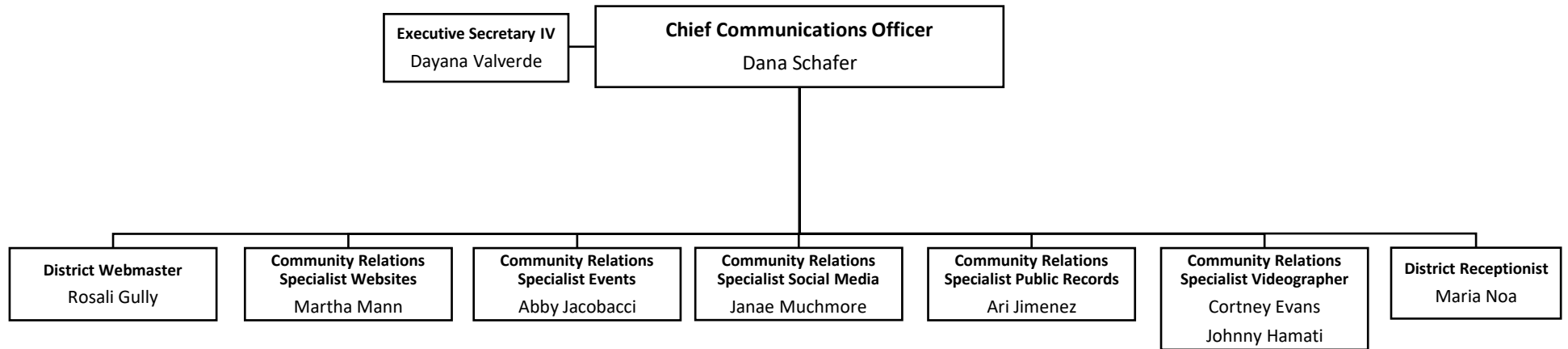
STUDENT SERVICES



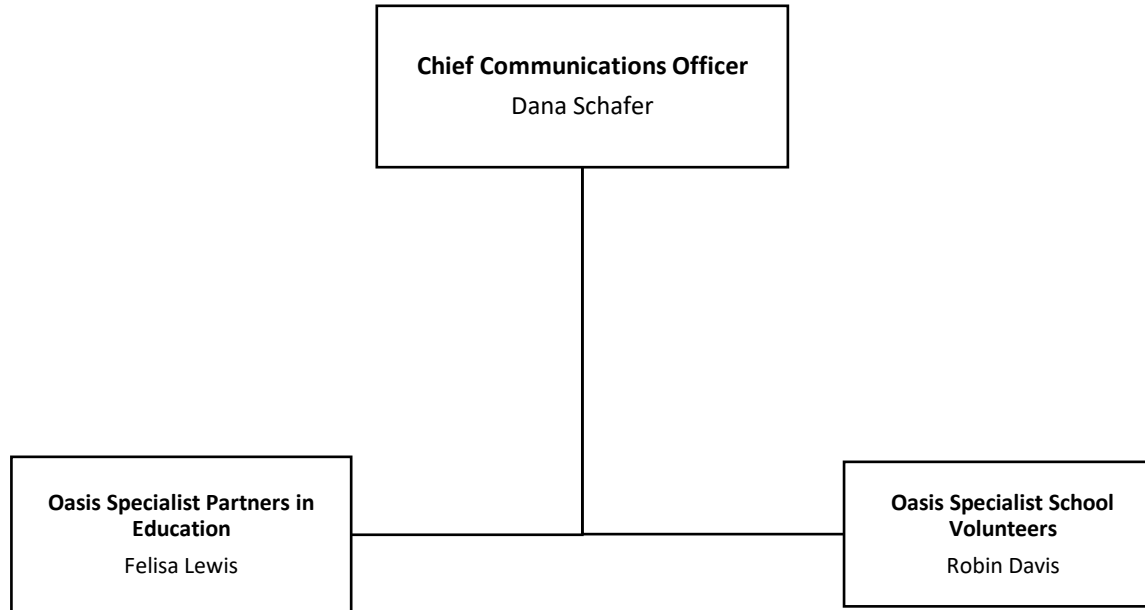
HUMAN RESOURCES



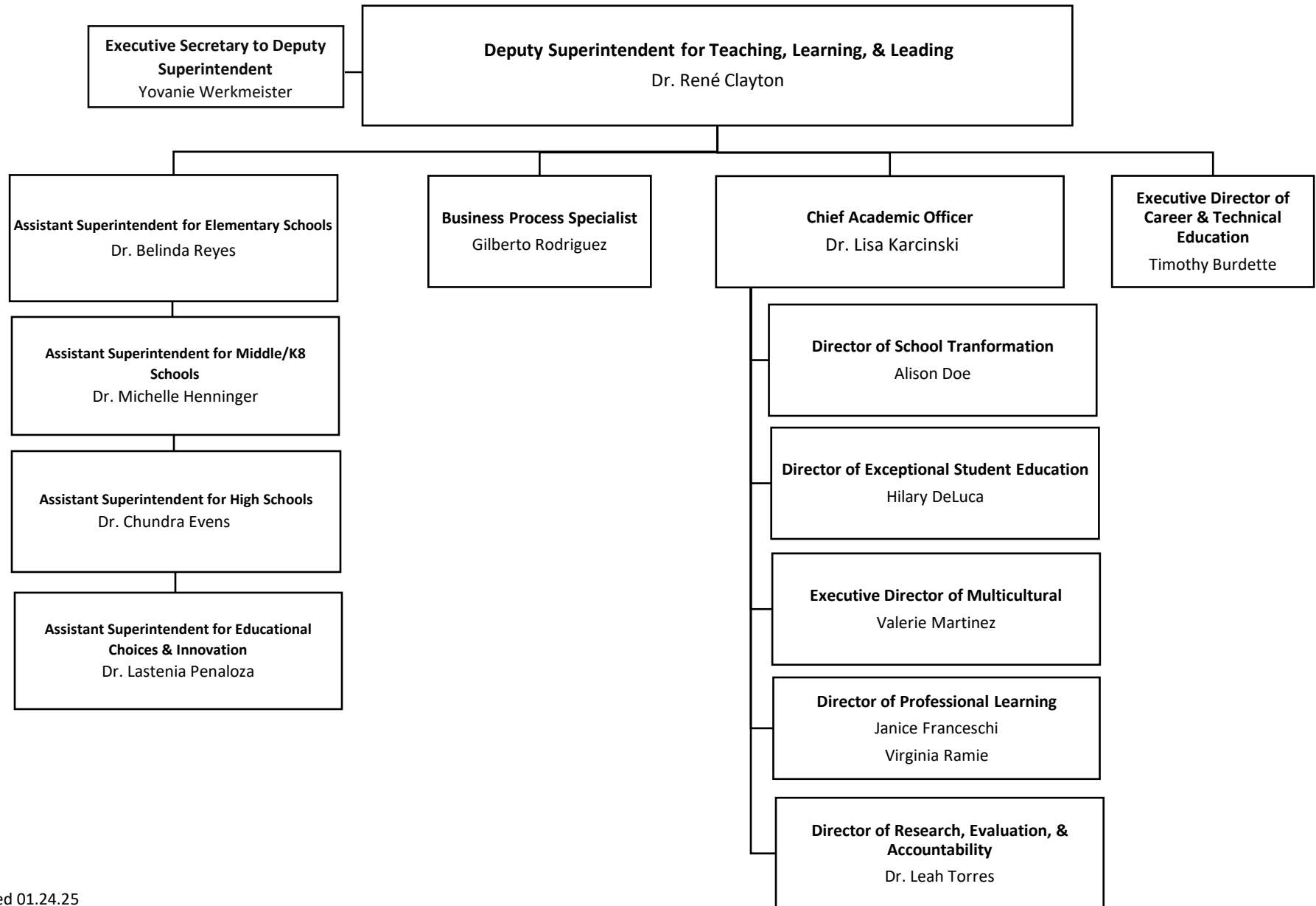
COMMUNITY RELATIONS



OASIS



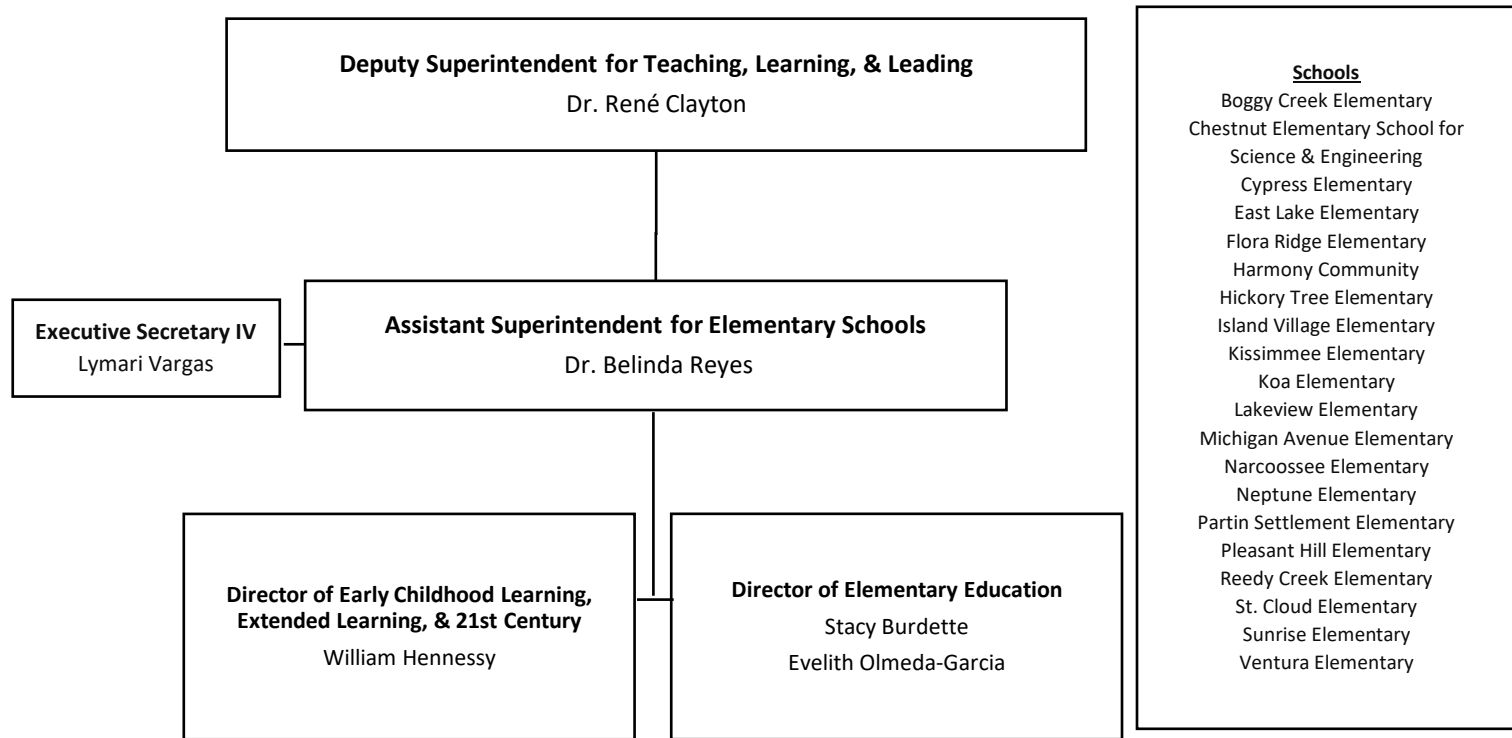
TEACHING, LEARNING, & LEADING



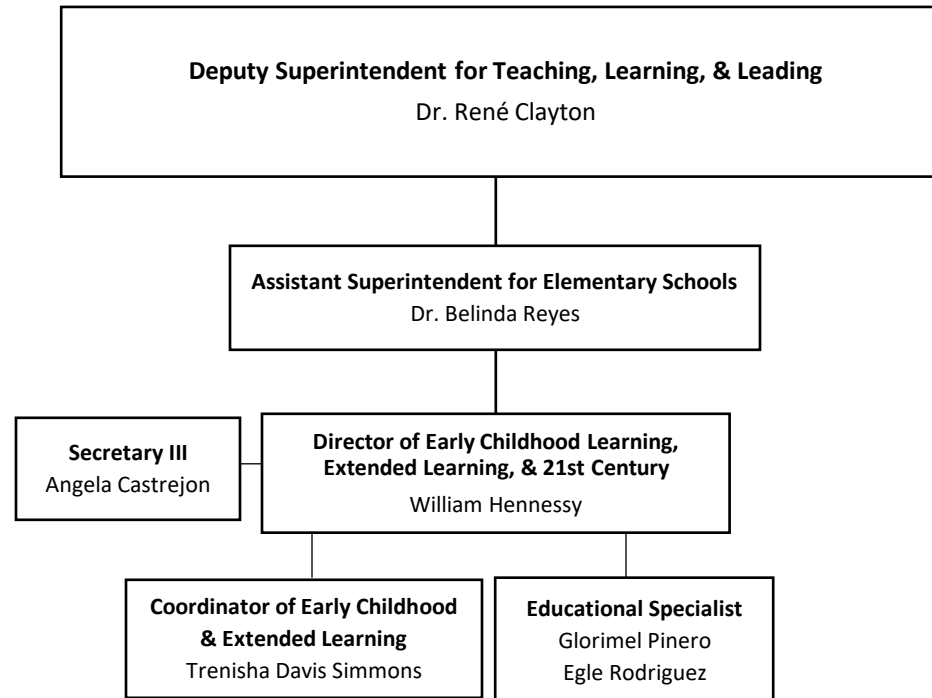
Revised 01.24.25

School District of Osceola County

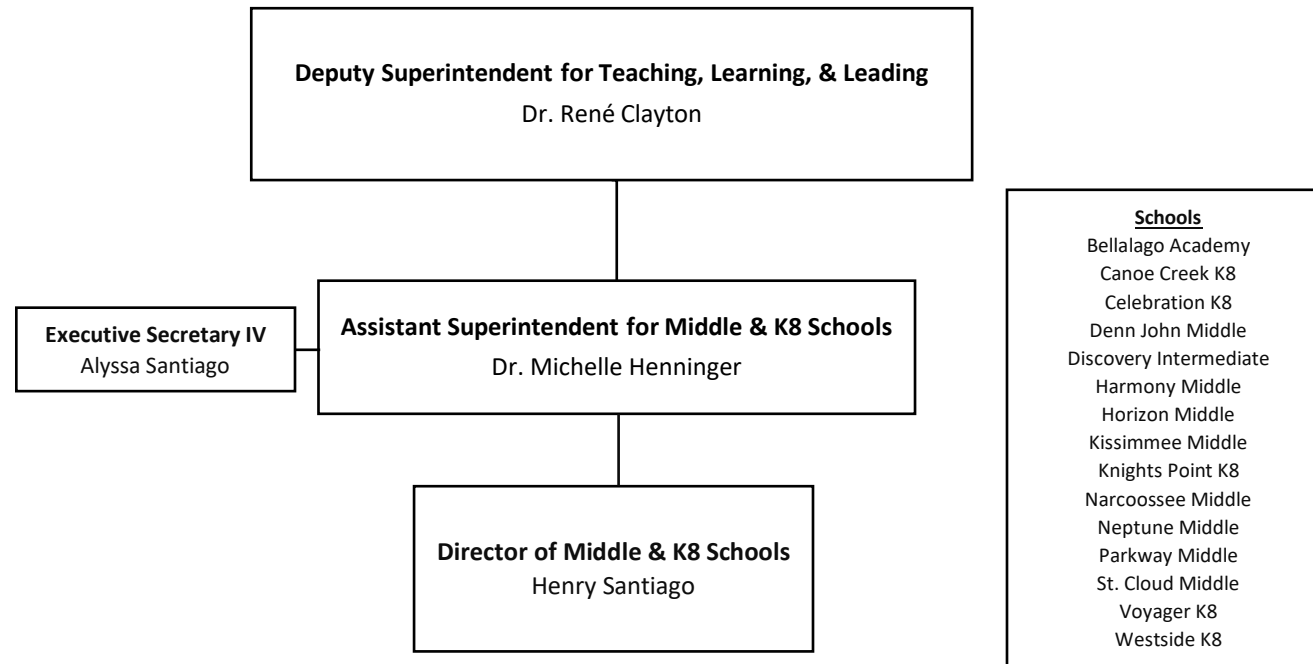
ELEMENTARY SCHOOLS



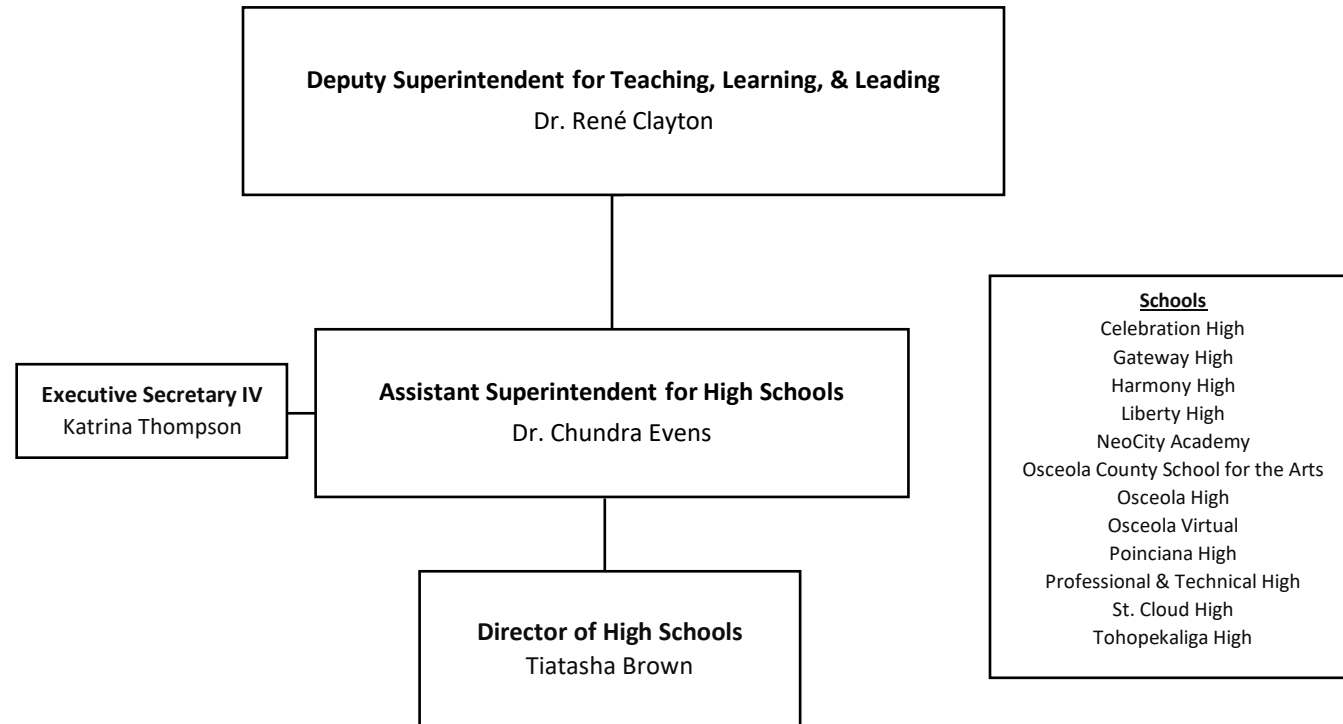
EARLY CHILDHOOD LEARNING, EXTENDED LEARNING, & 21ST CENTURY



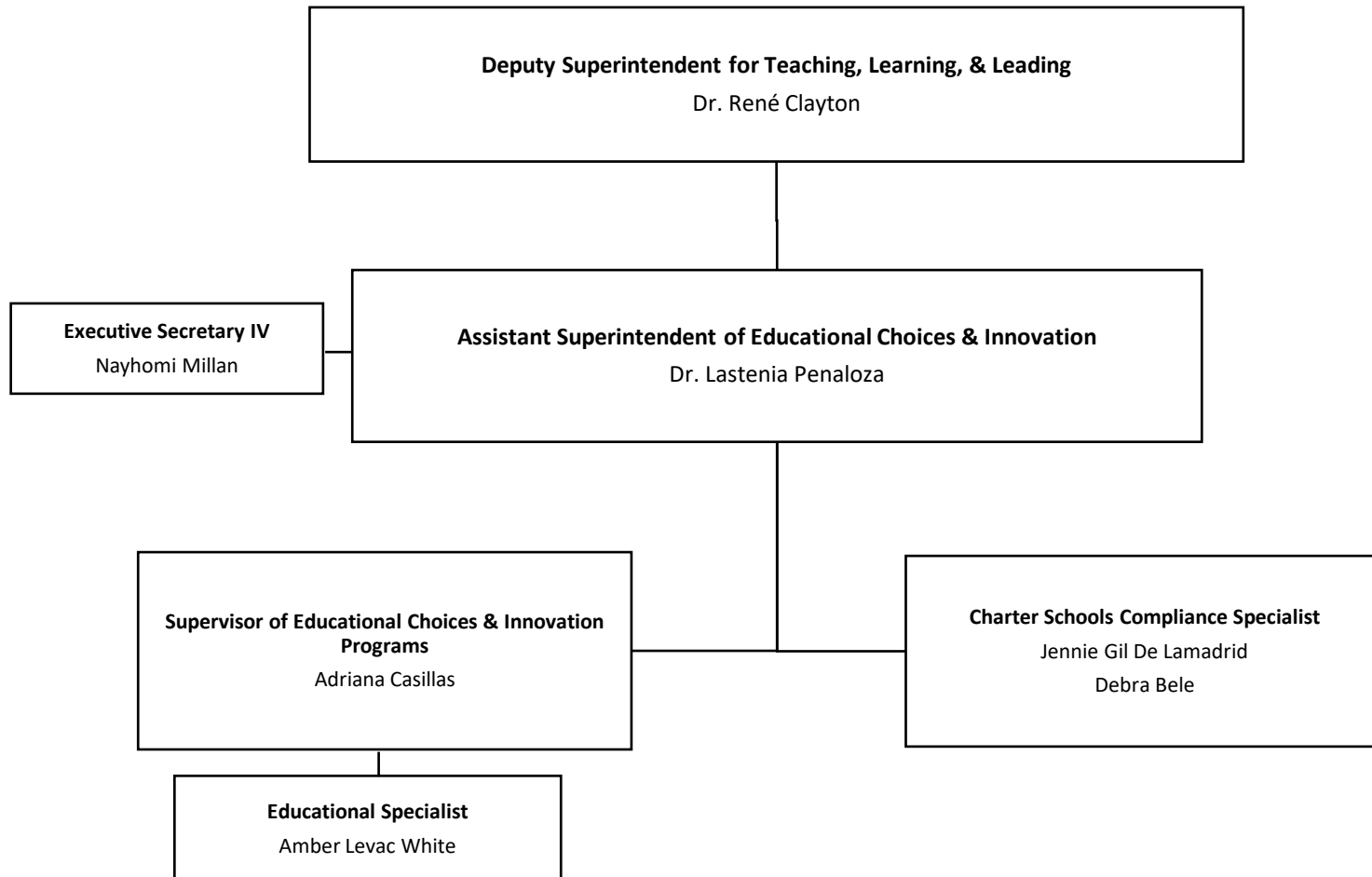
MIDDLE & K8 SCHOOLS



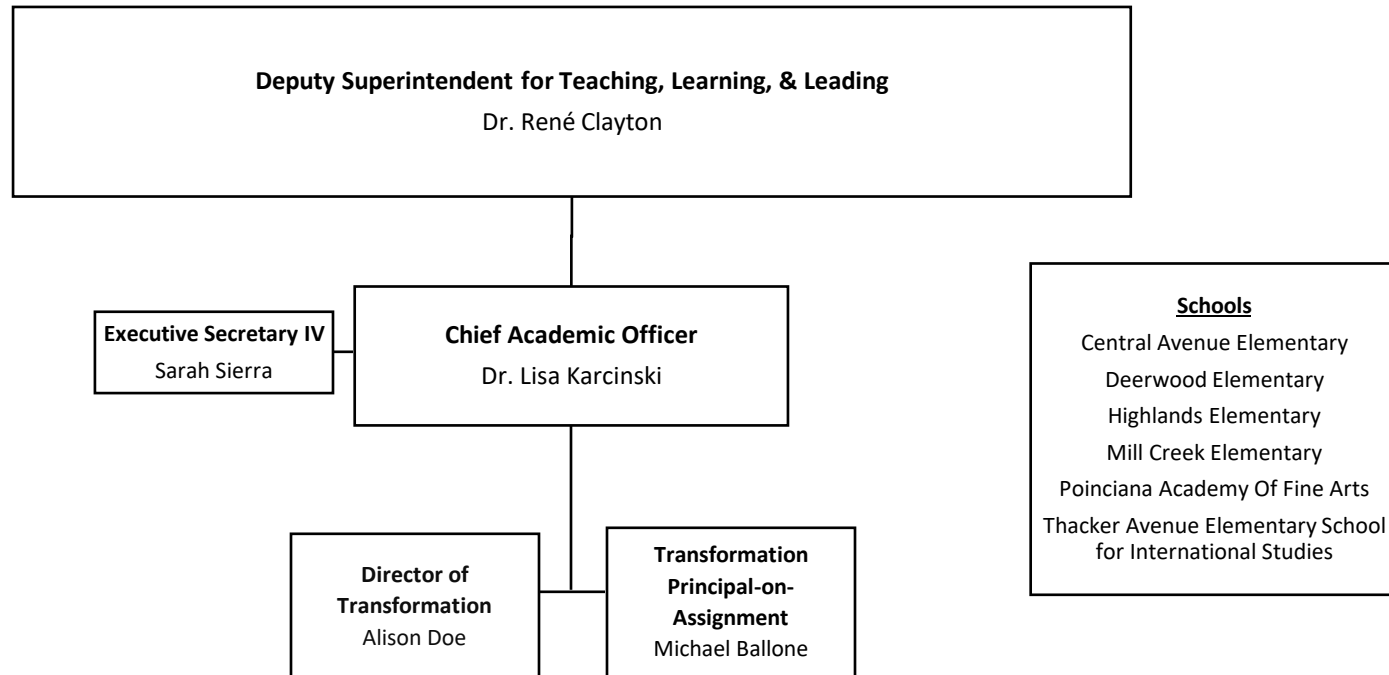
HIGH SCHOOLS



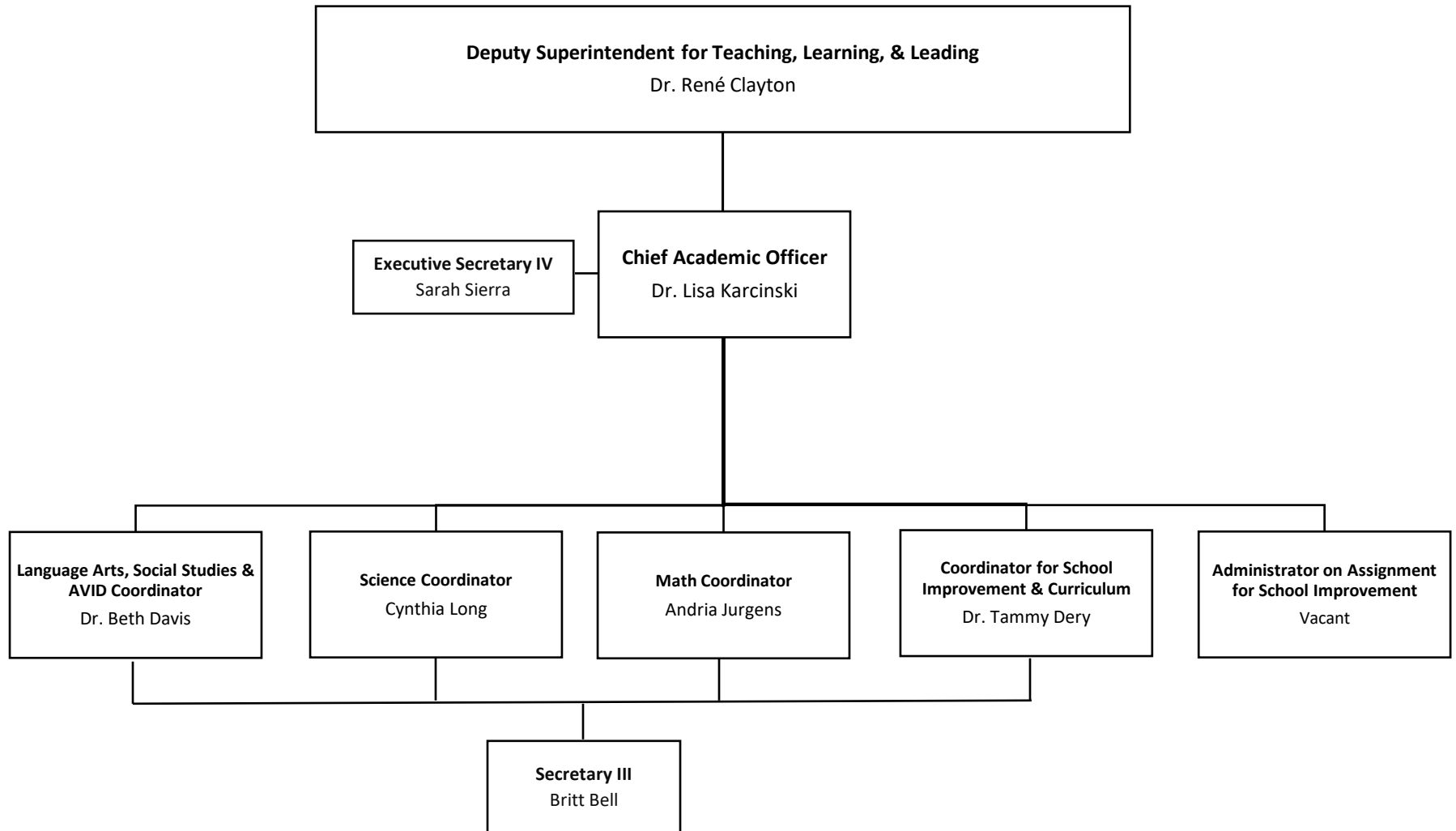
EDUCATIONAL CHOICES & INNOVATION



SCHOOL TRANSFORMATION



CURRICULUM & INSTRUCTION

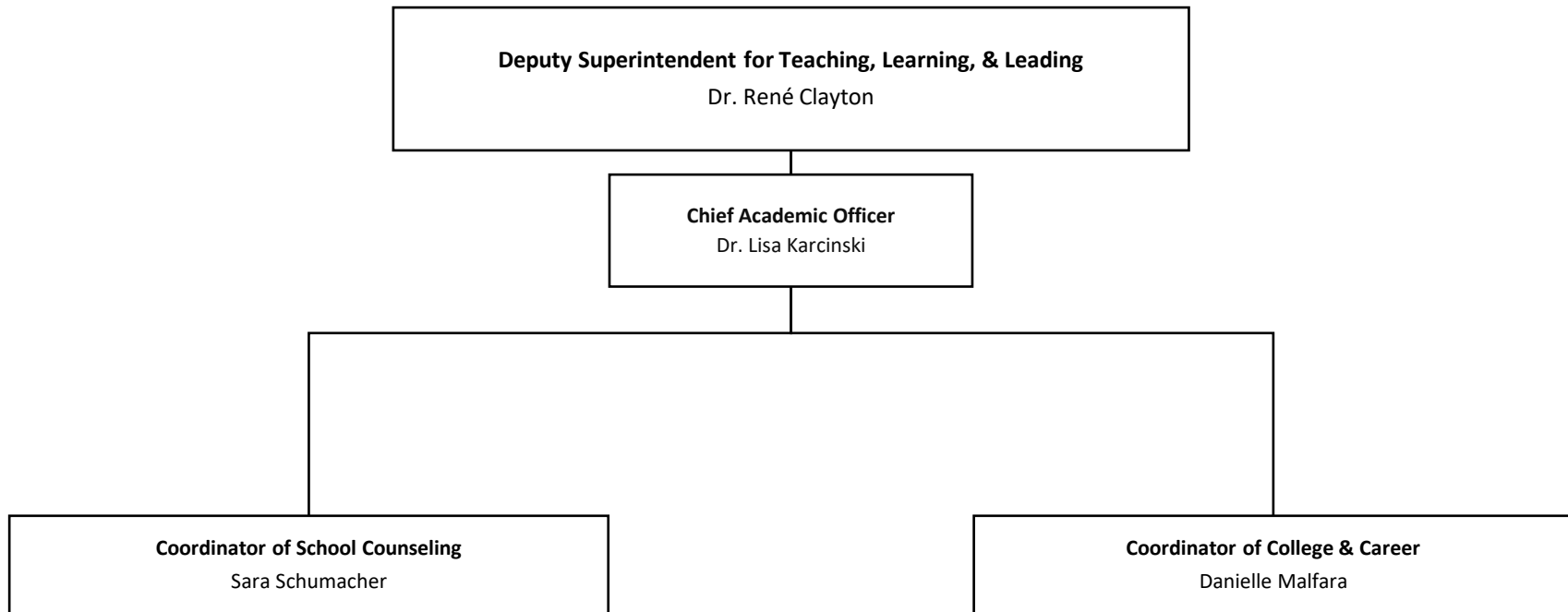


Revised 01.24.25

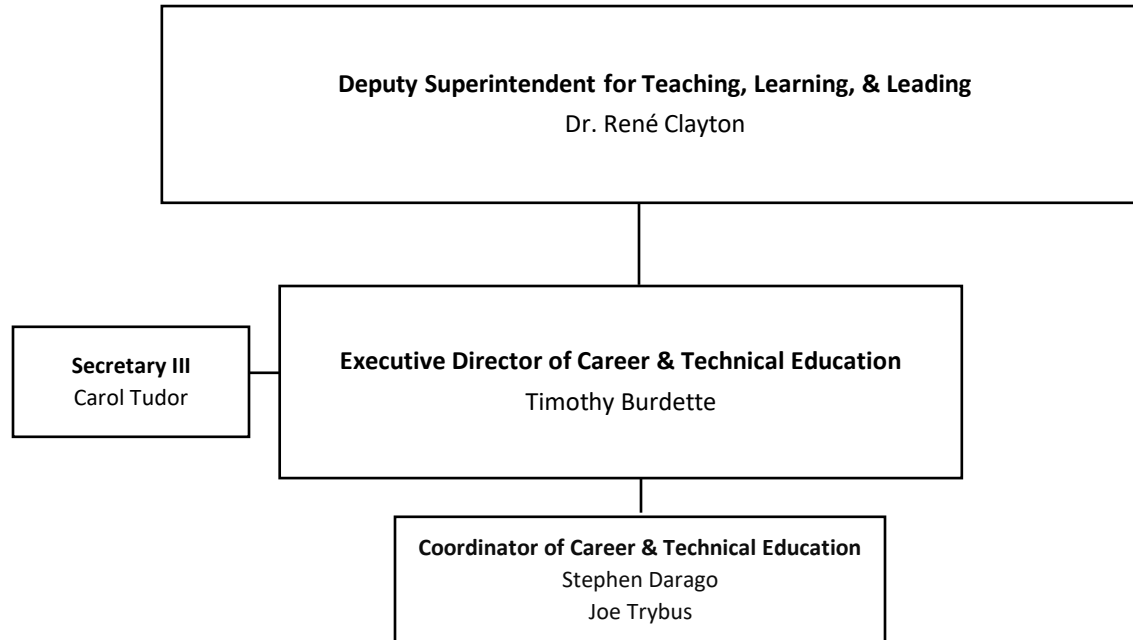
School District of Osceola County

school

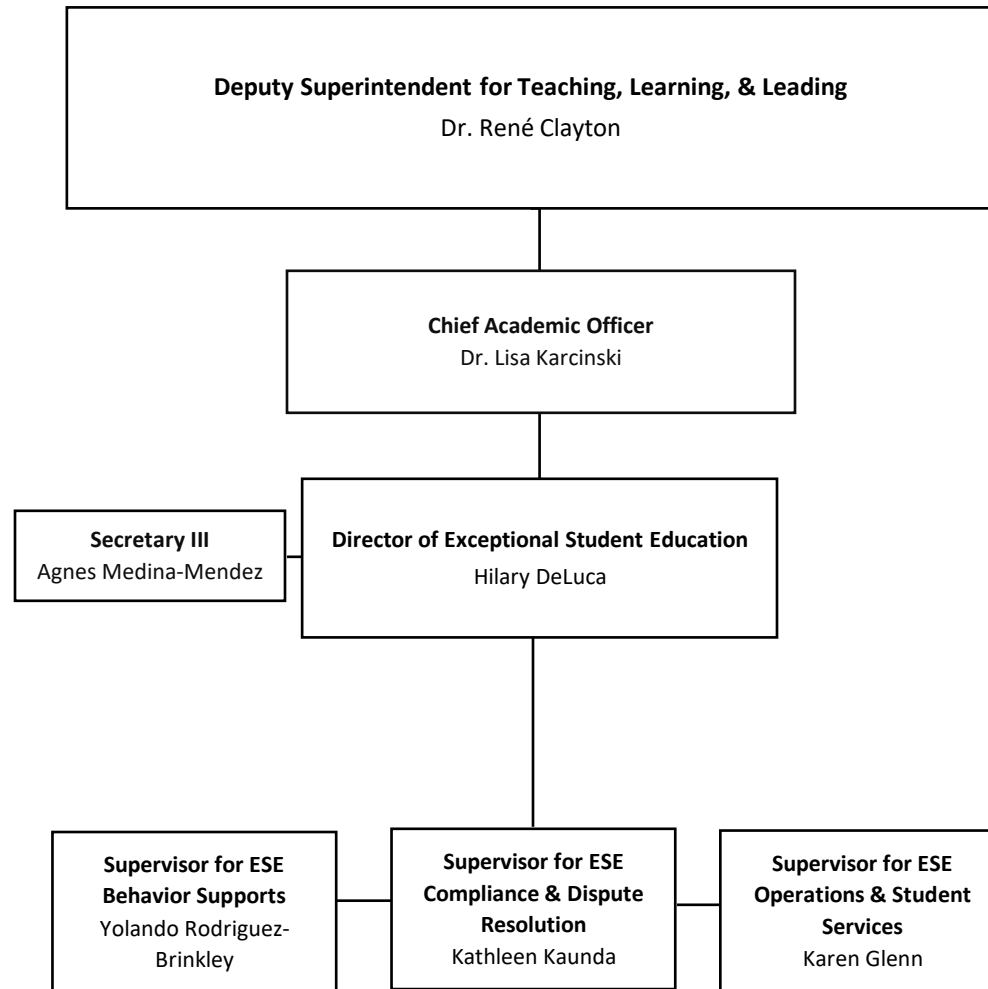
GUIDANCE SERVICES



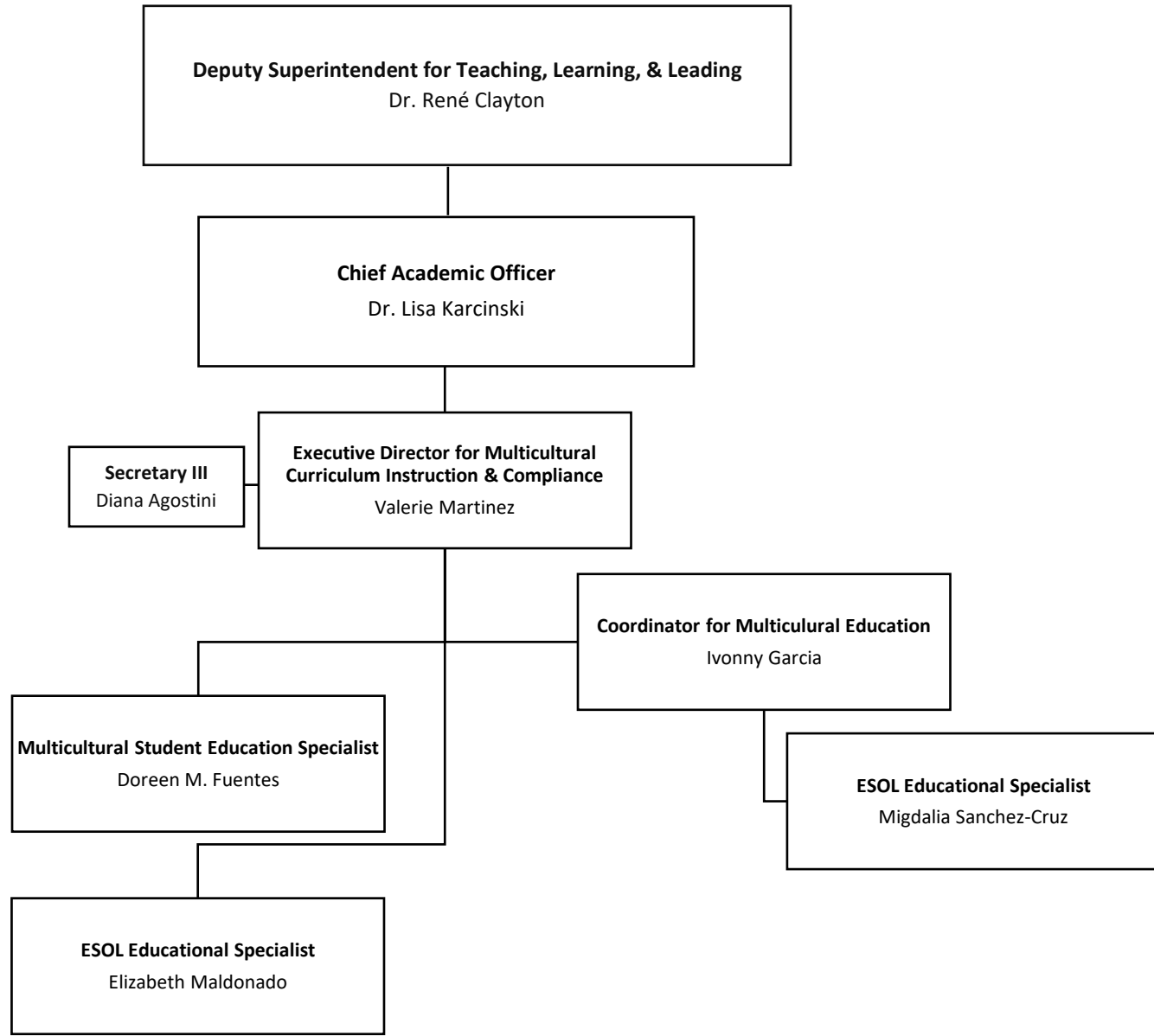
CAREER & TECHNICAL EDUCATION



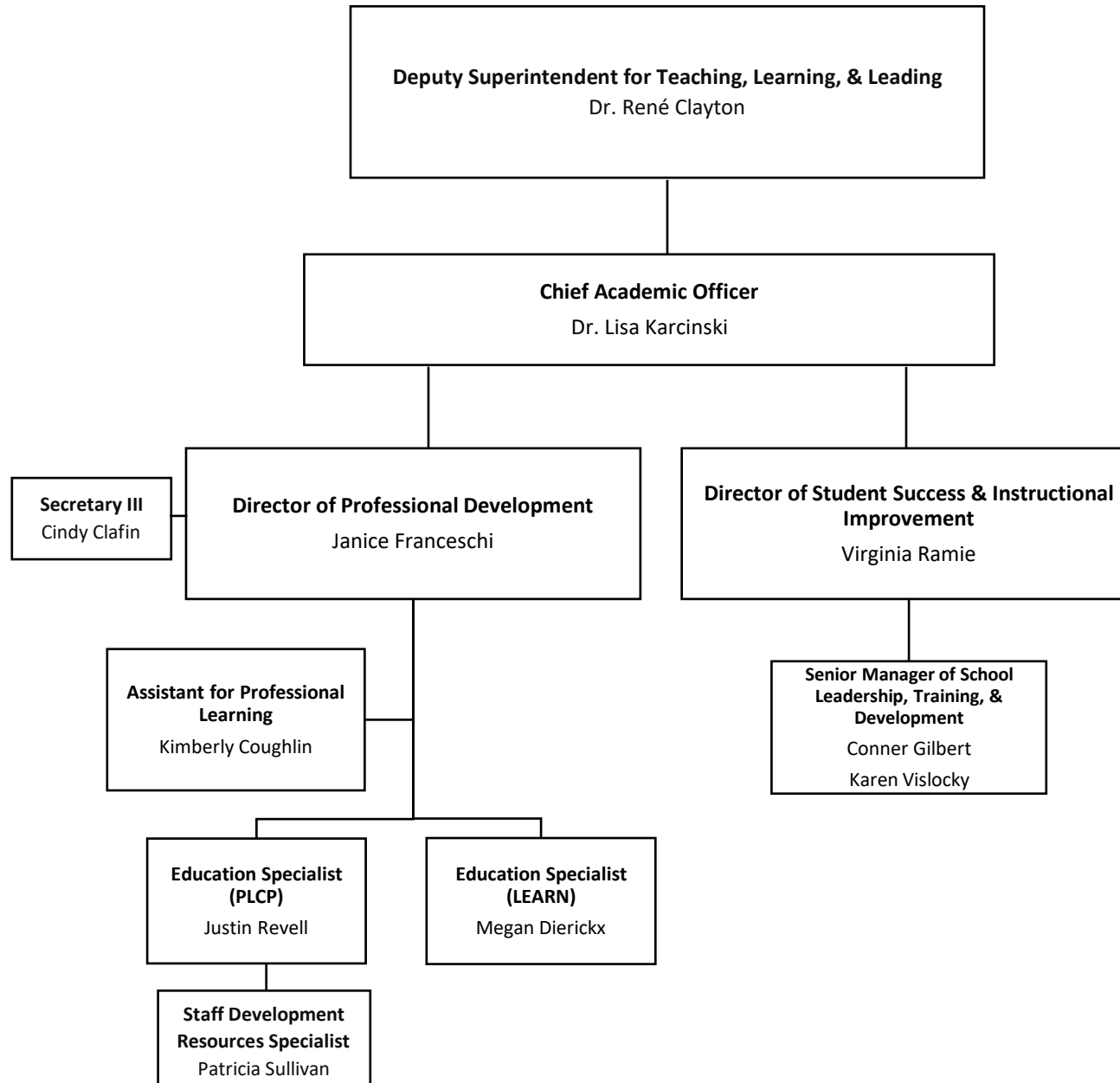
EXCEPTIONAL STUDENT EDUCATION



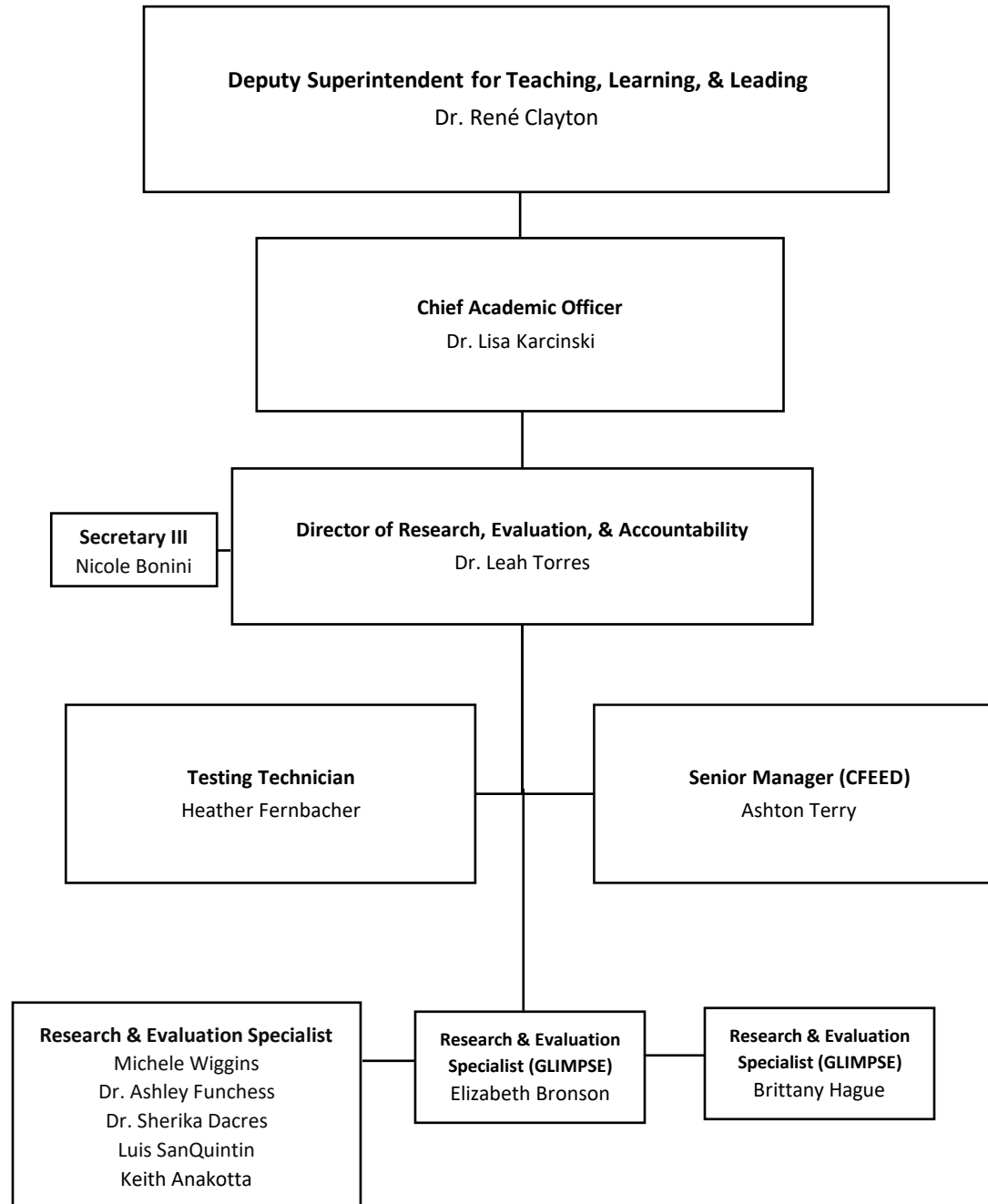
MULTICULTURAL EDUCATION



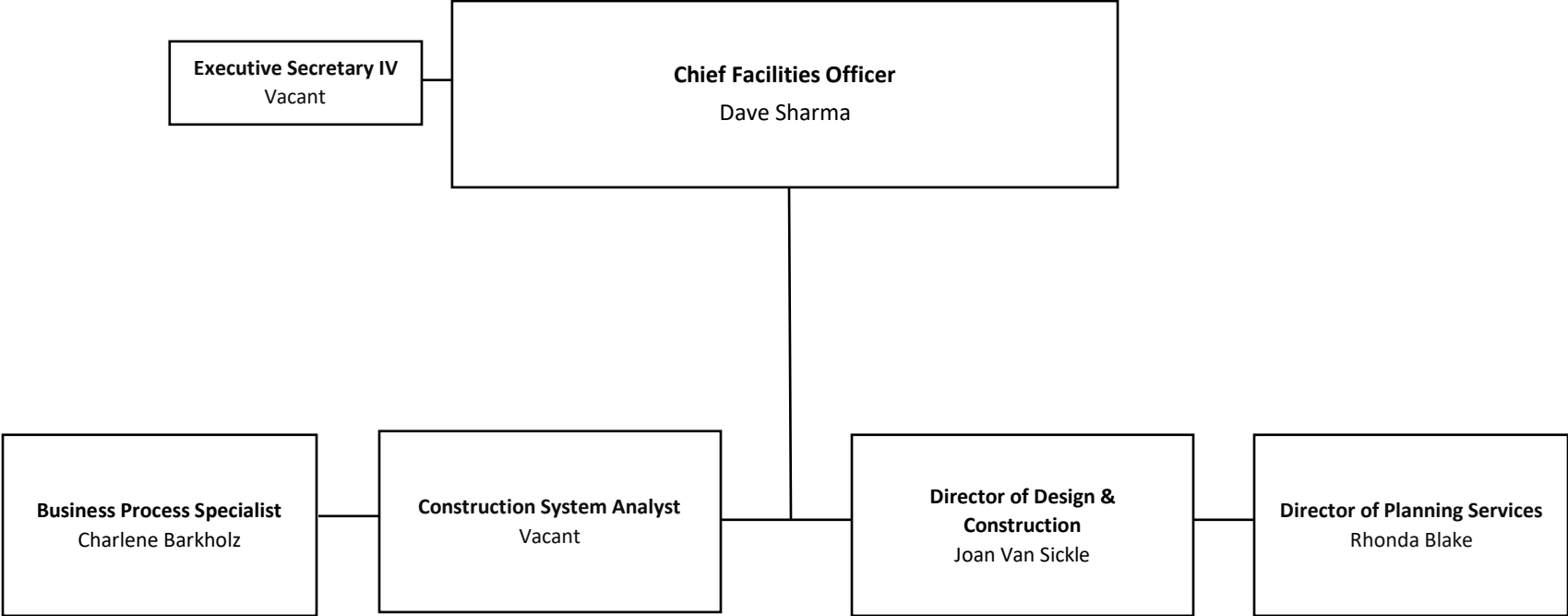
PROFESSIONAL LEARNING



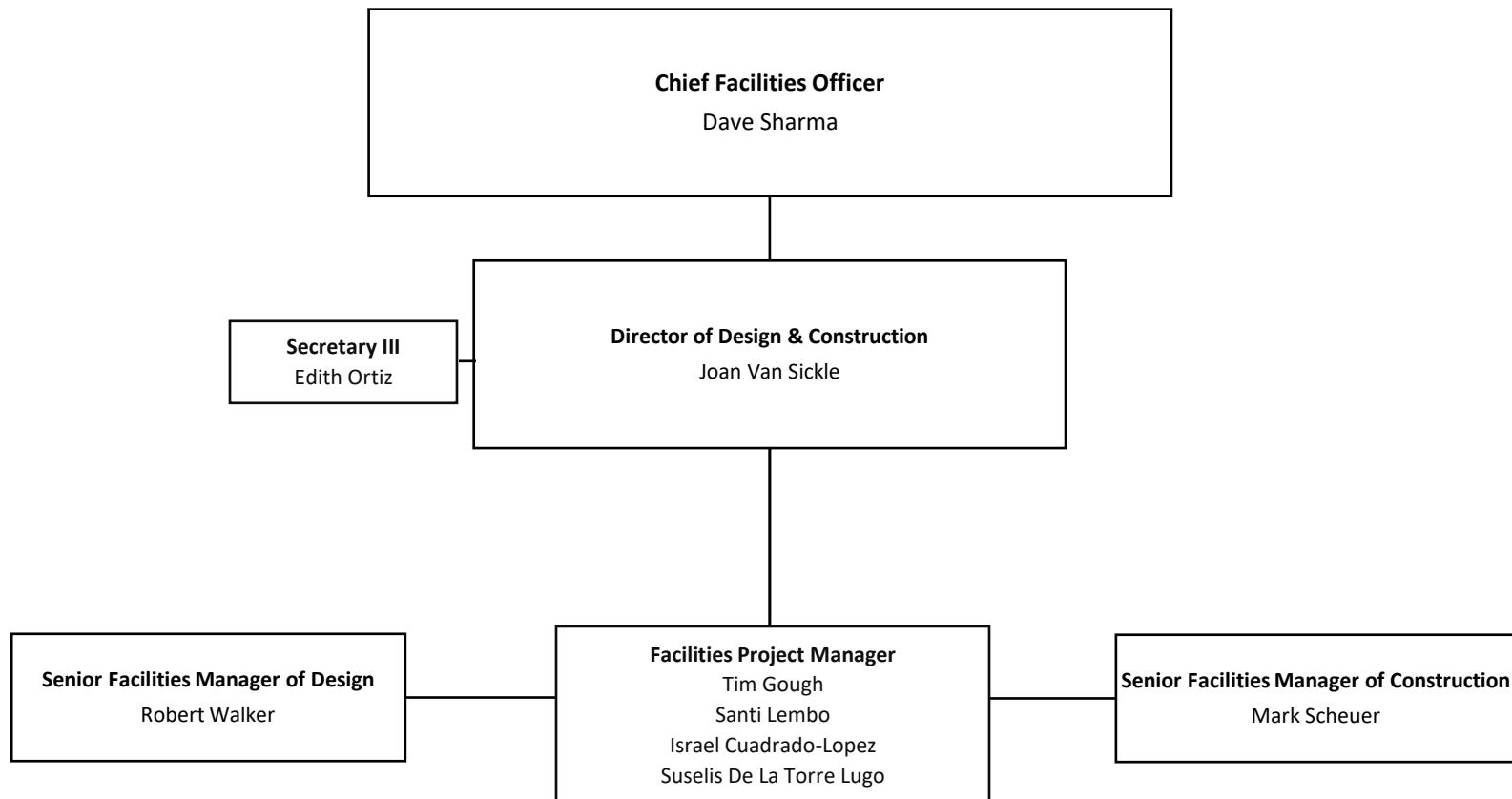
RESEARCH, EVALUATION, & ACCOUNTABILITY



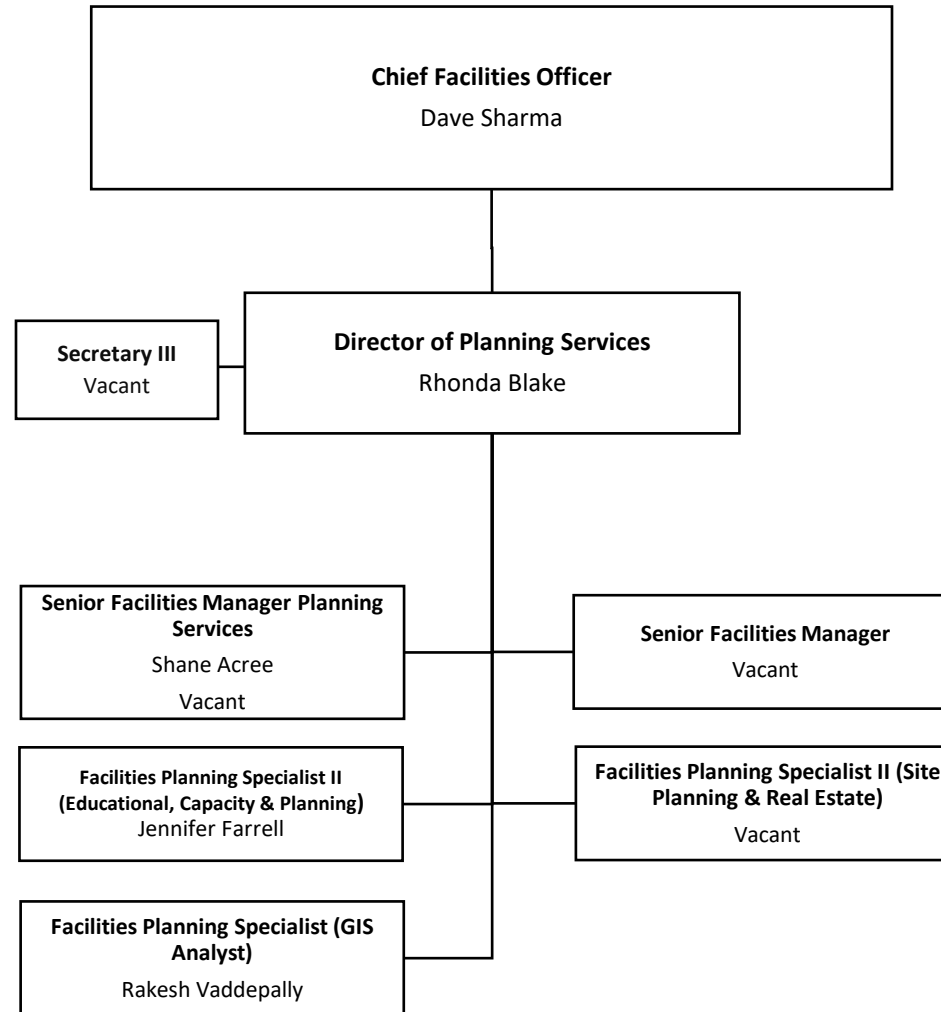
FACILITIES



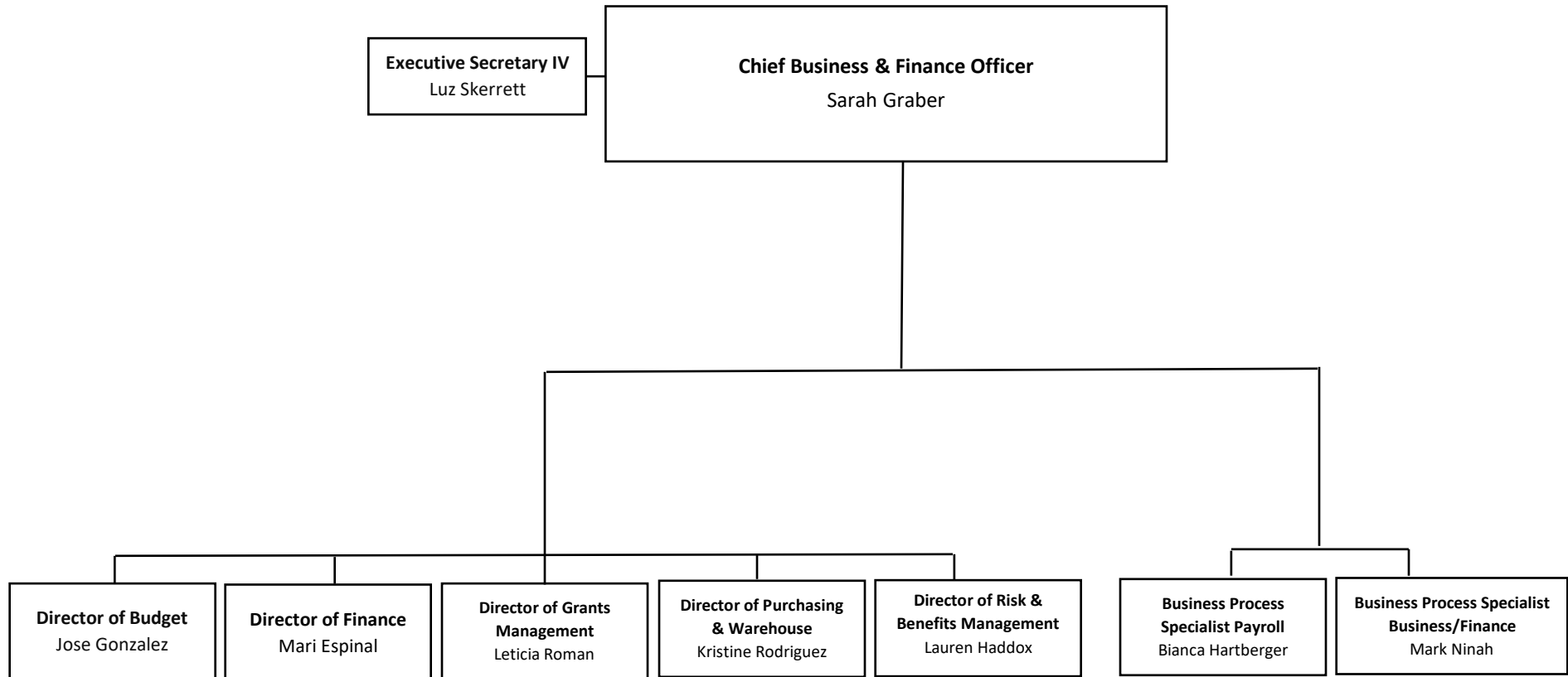
DESIGN & CONSTRUCTION



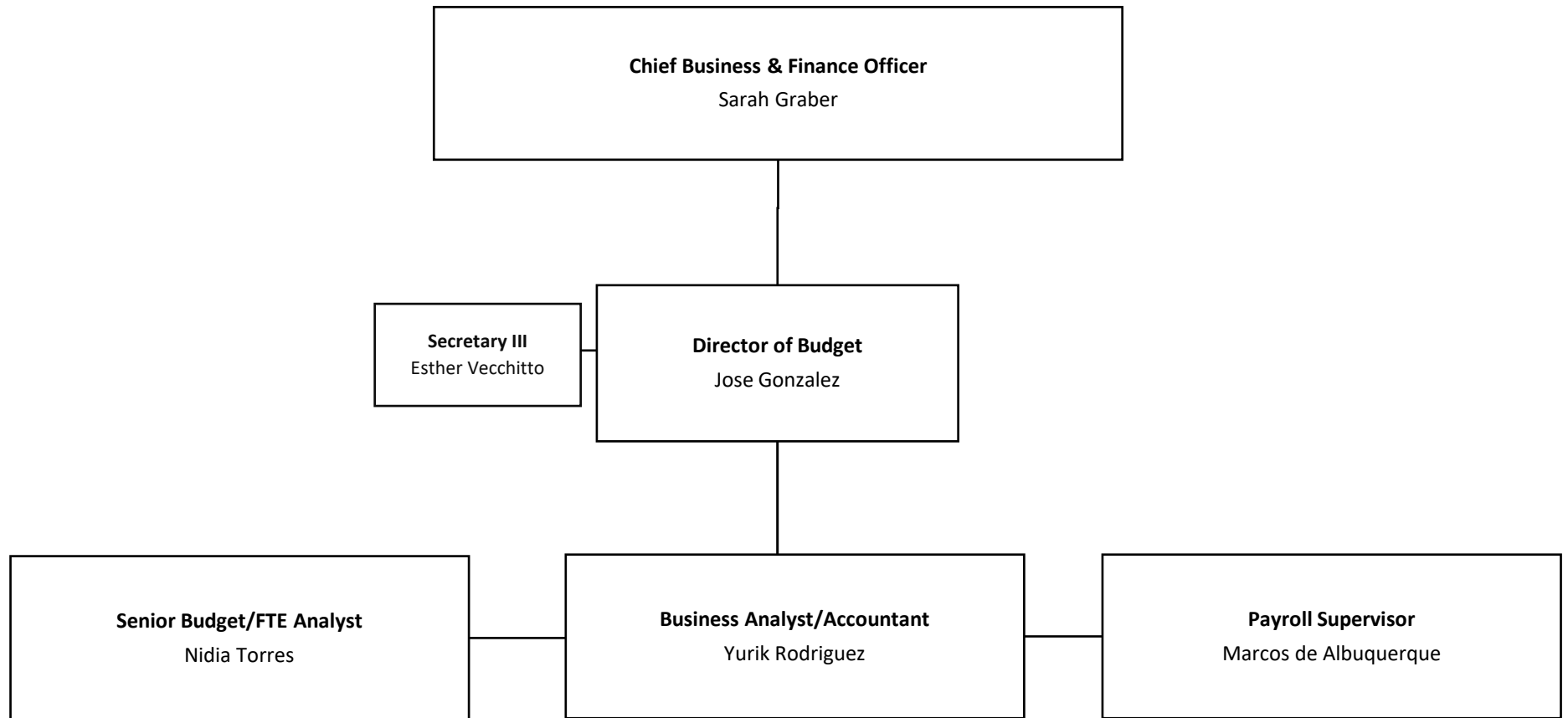
PLANNING SERVICES



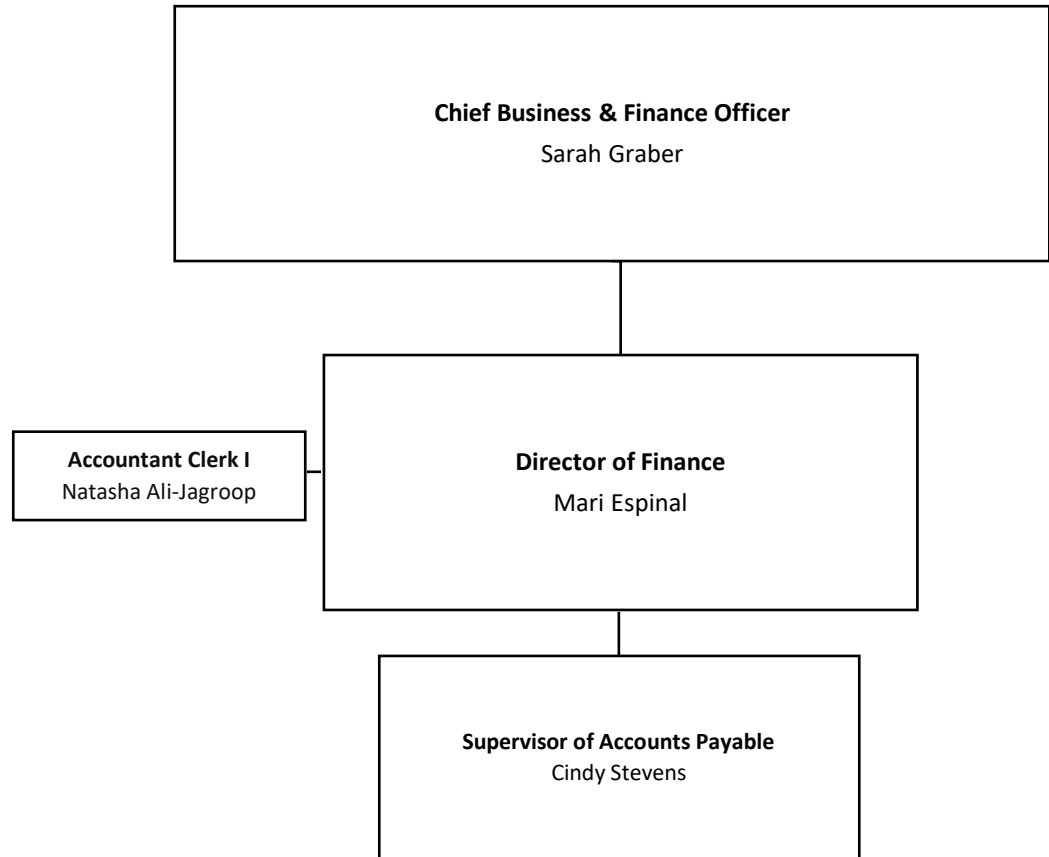
BUSINESS & FISCAL SERVICES



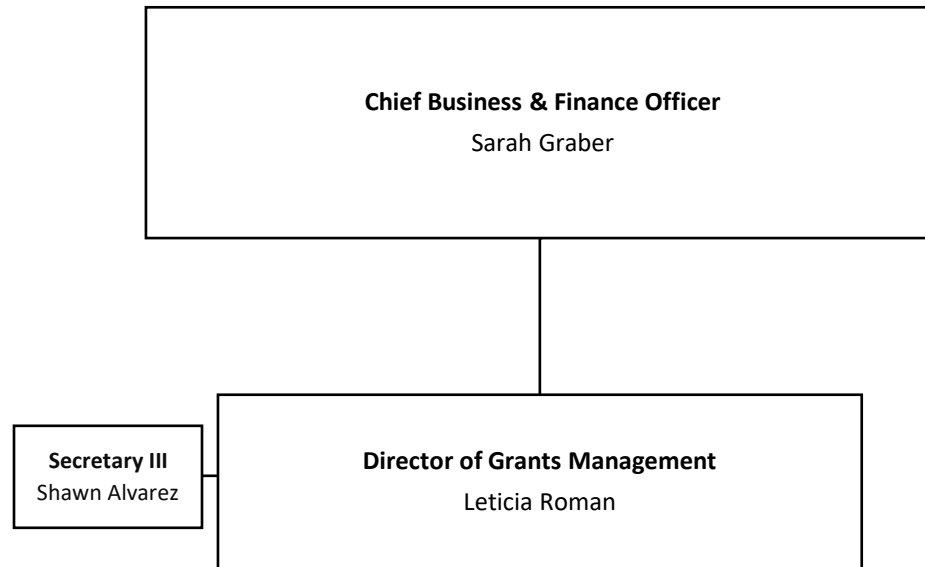
BUDGET



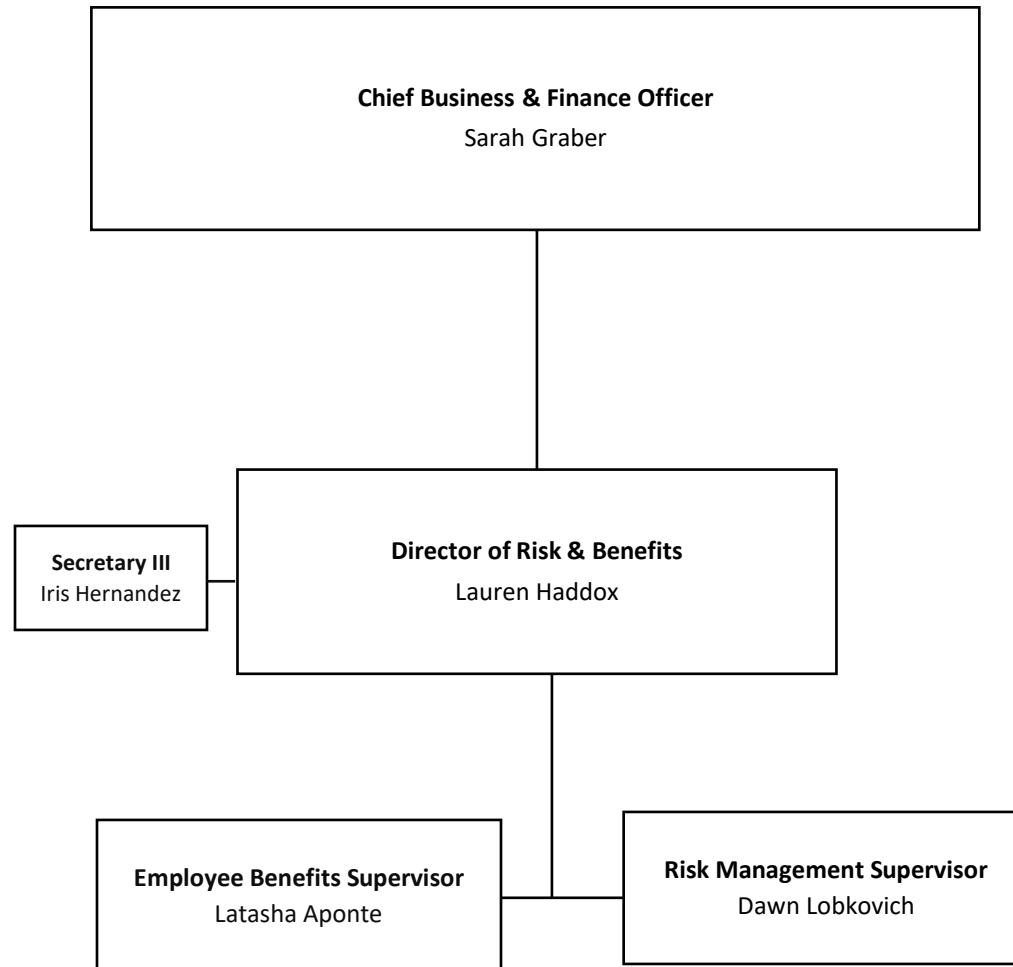
FINANCE



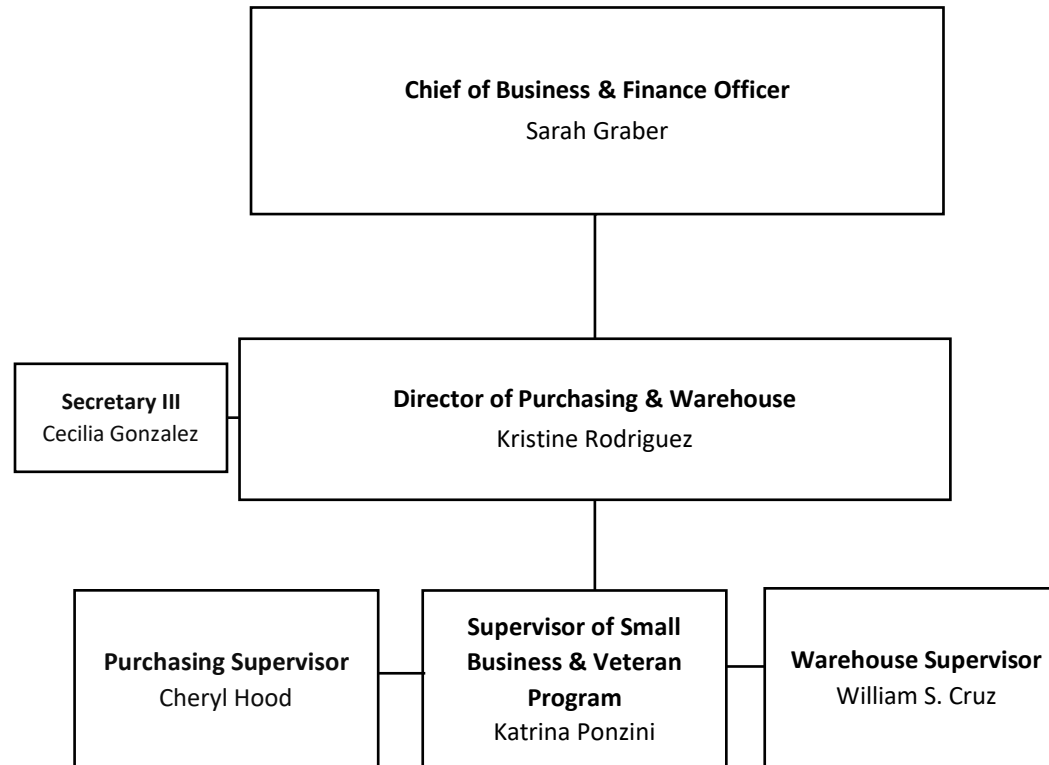
GRANTS MANAGEMENT



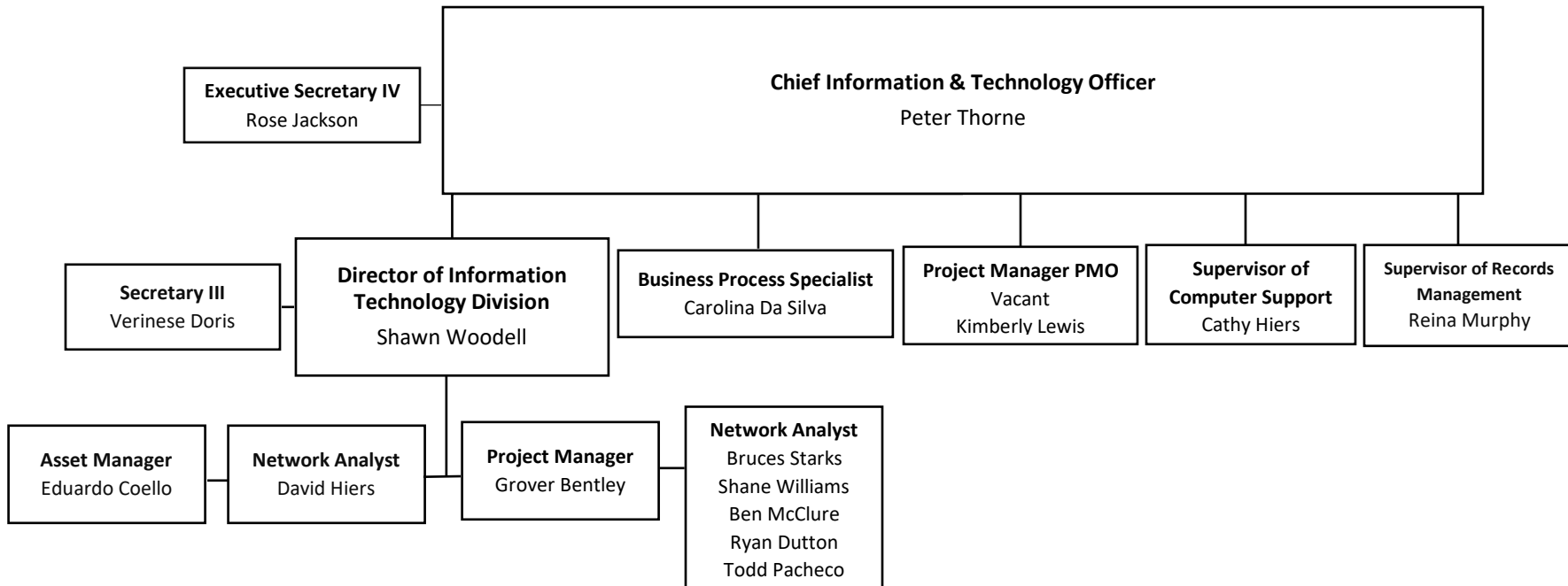
RISK & BENEFITS



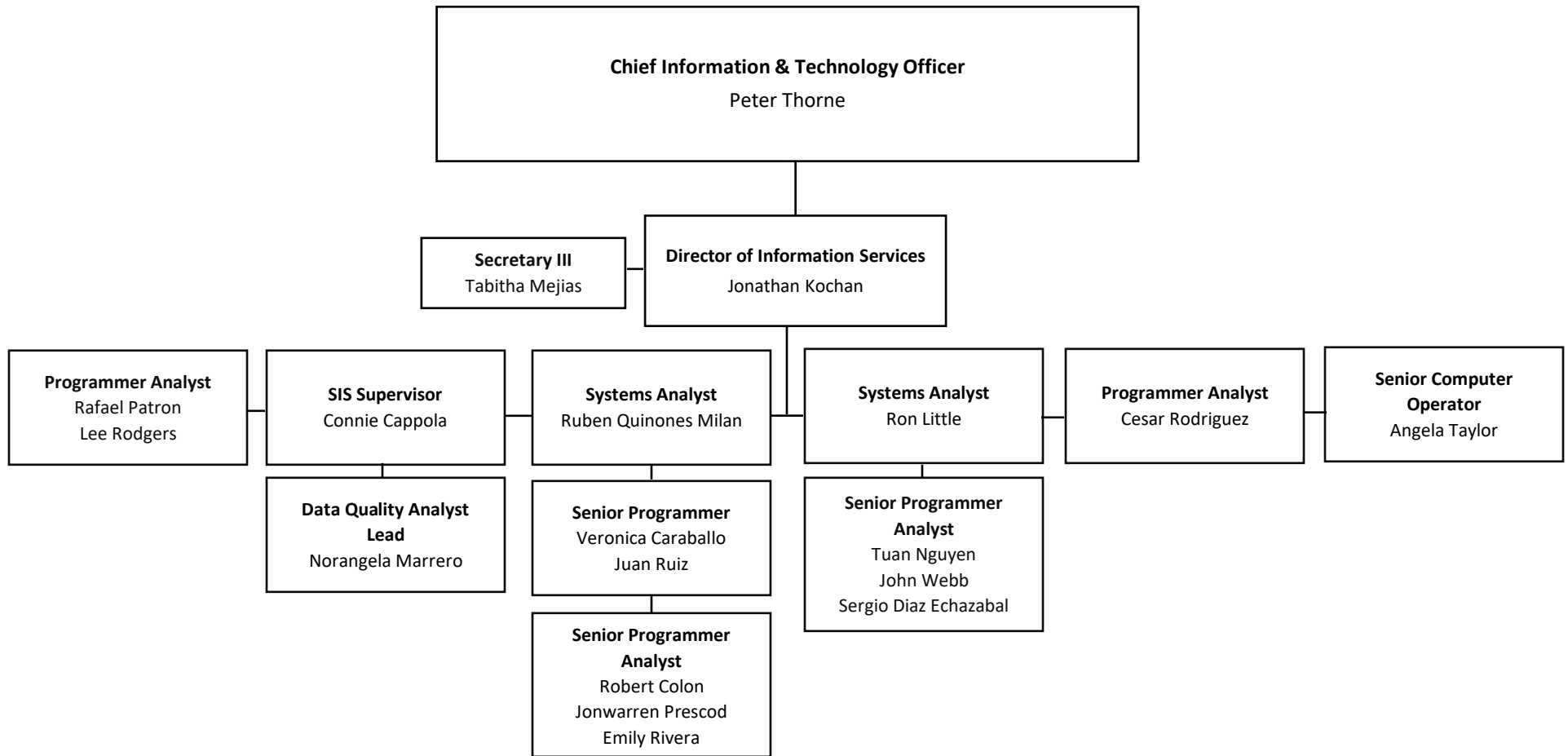
PURCHASING & WAREHOUSE



INFORMATION TECHNOLOGY DIVISION



INFORMATION SERVICES

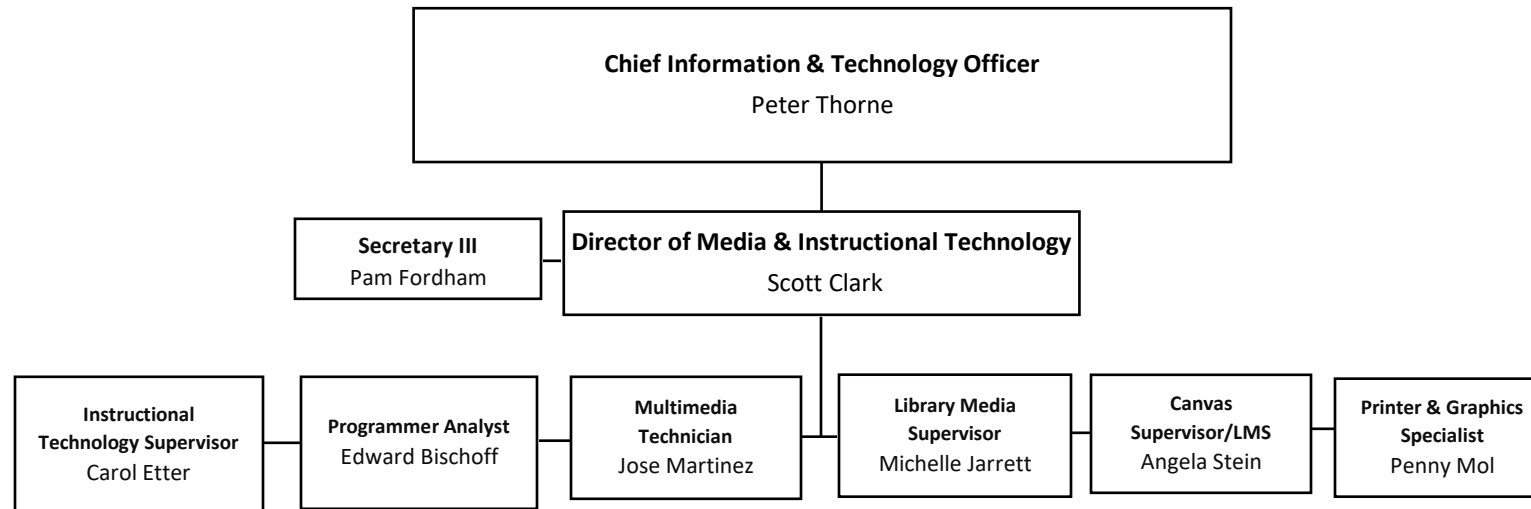


pln

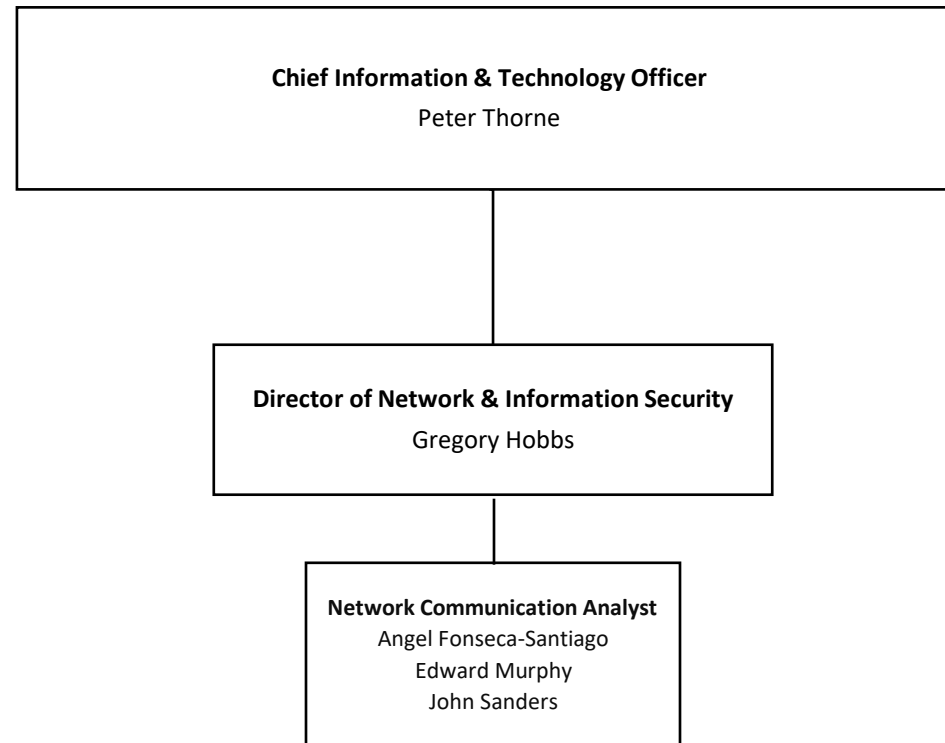
Revised 01.24.25

School District of Osceola County

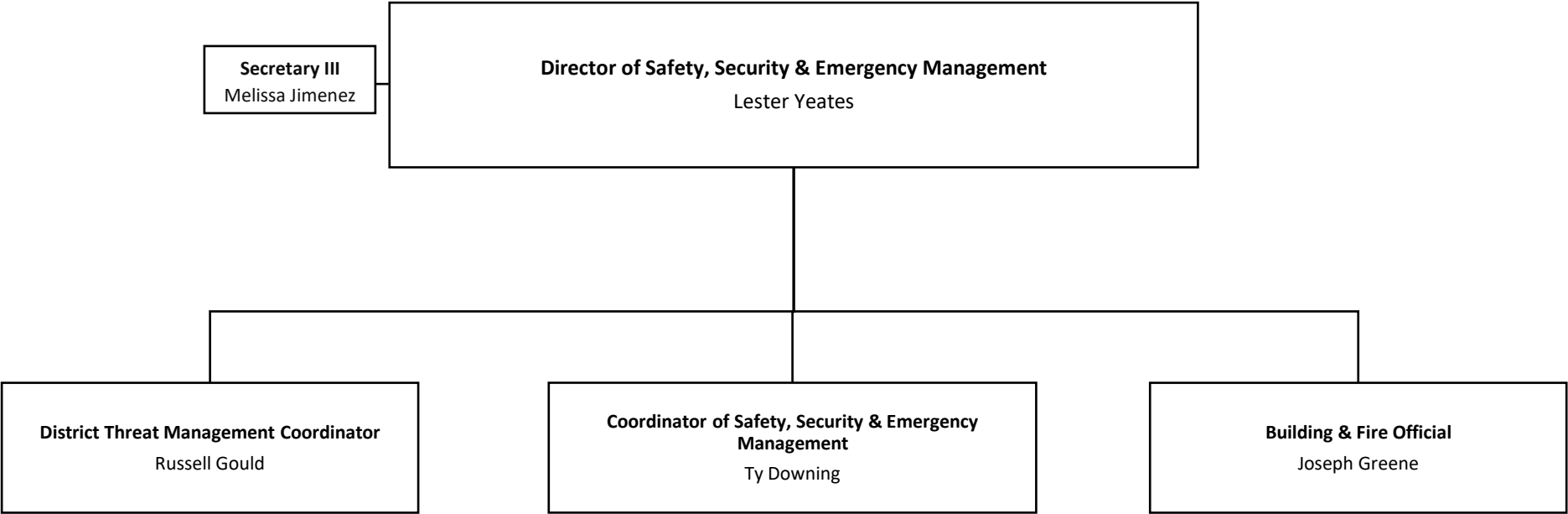
MEDIA & INSTRUCTIONAL TECHNOLOGY



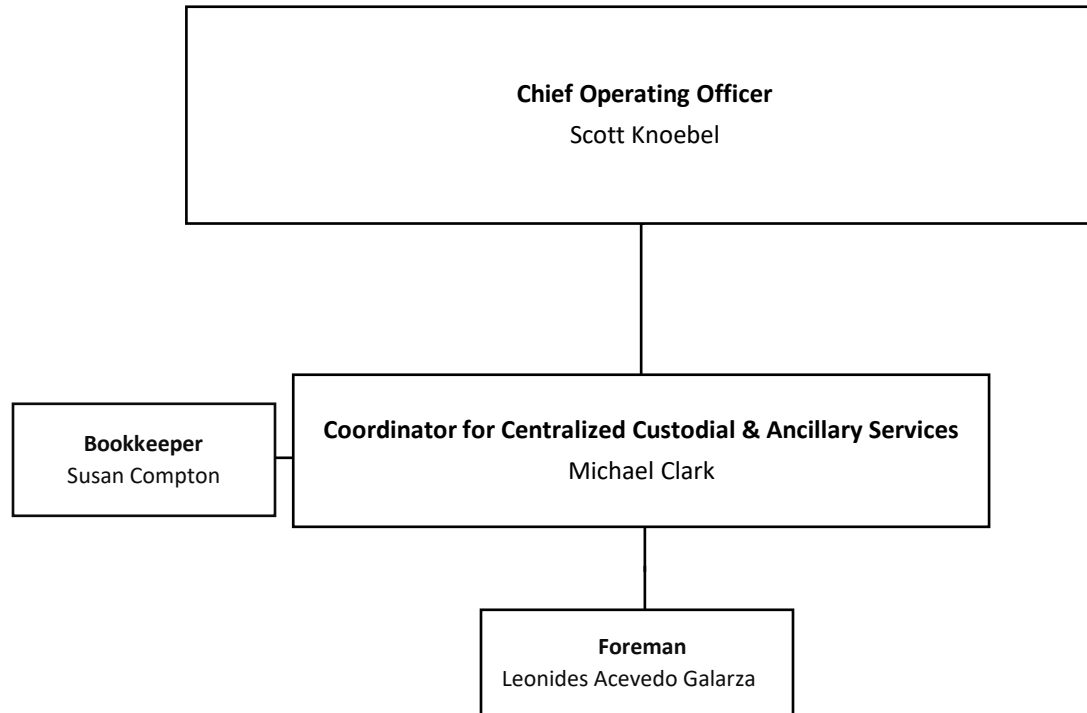
NETWORK & INFORMATION SECURITY



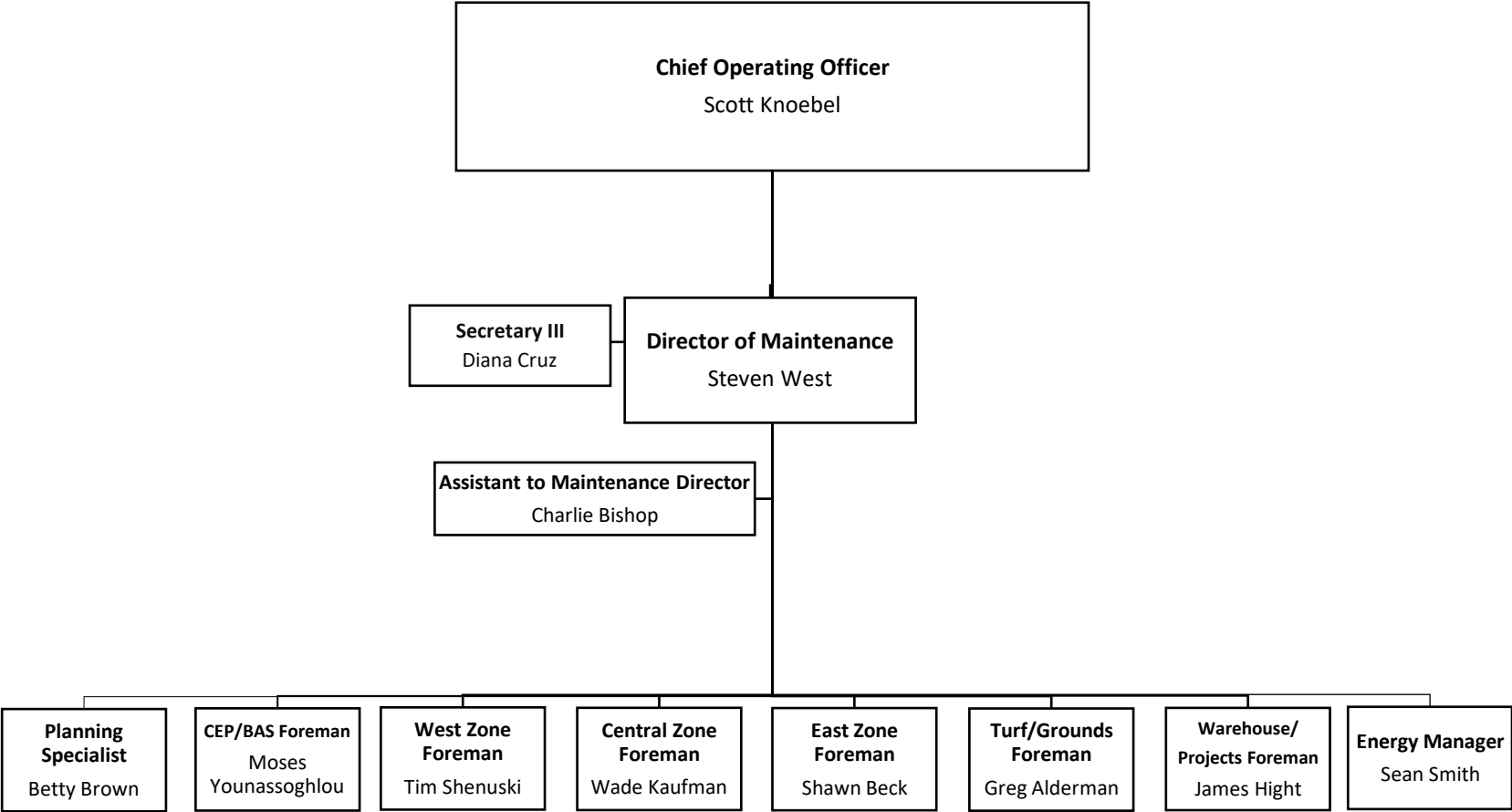
SAFETY, SECURITY & EMERGENCY MANAGEMENT



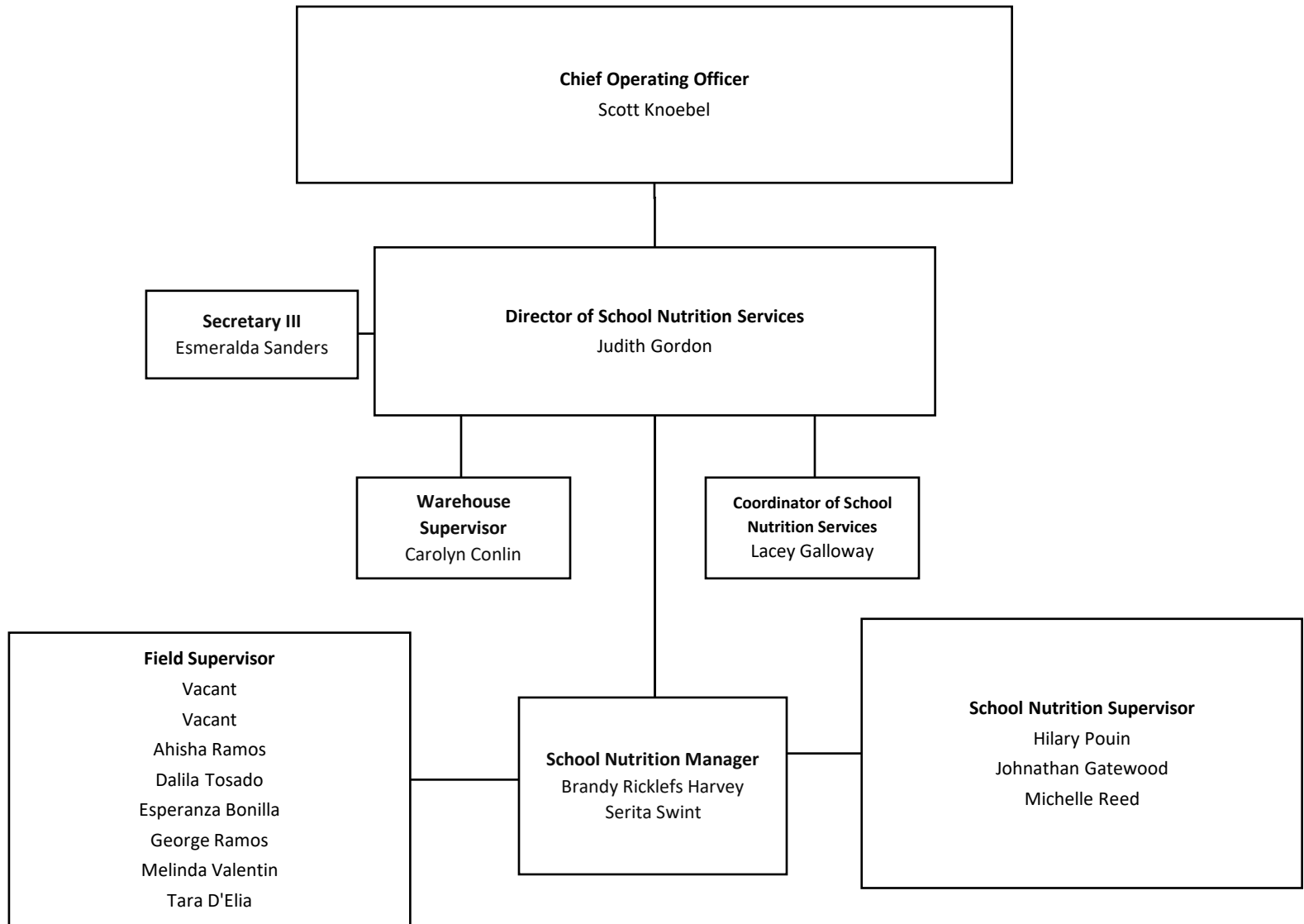
CENTRALIZED CUSTODIAL & ANCILLARY SERVICES



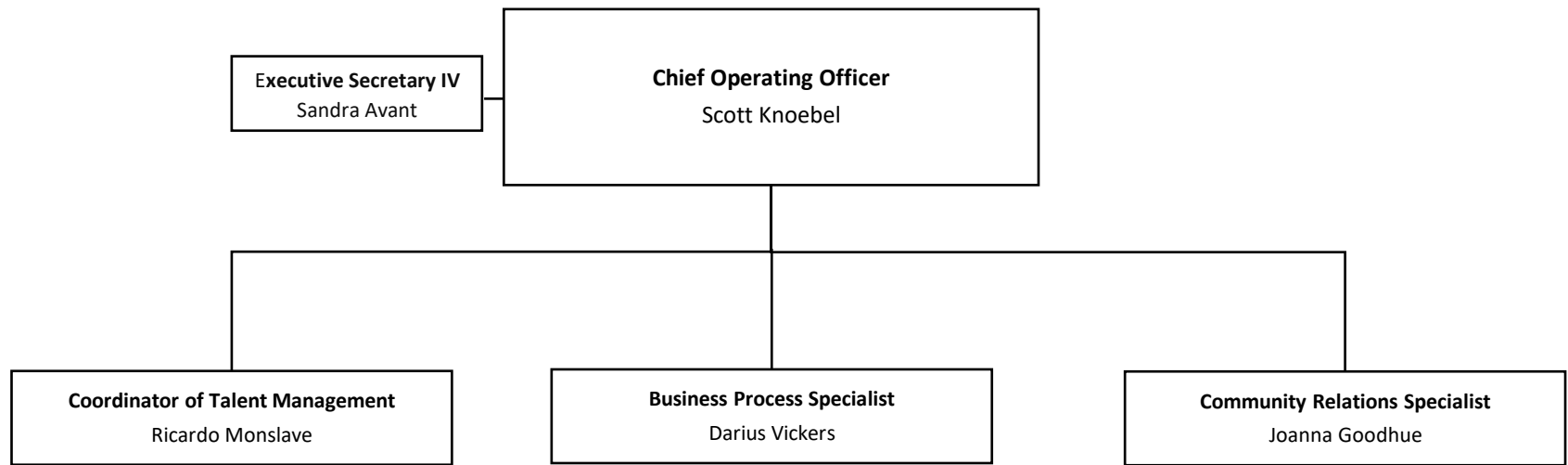
MAINTENANCE



SCHOOL NUTRITION SERVICES



SCHOOL OPERATIONS



TRANSPORTATION

