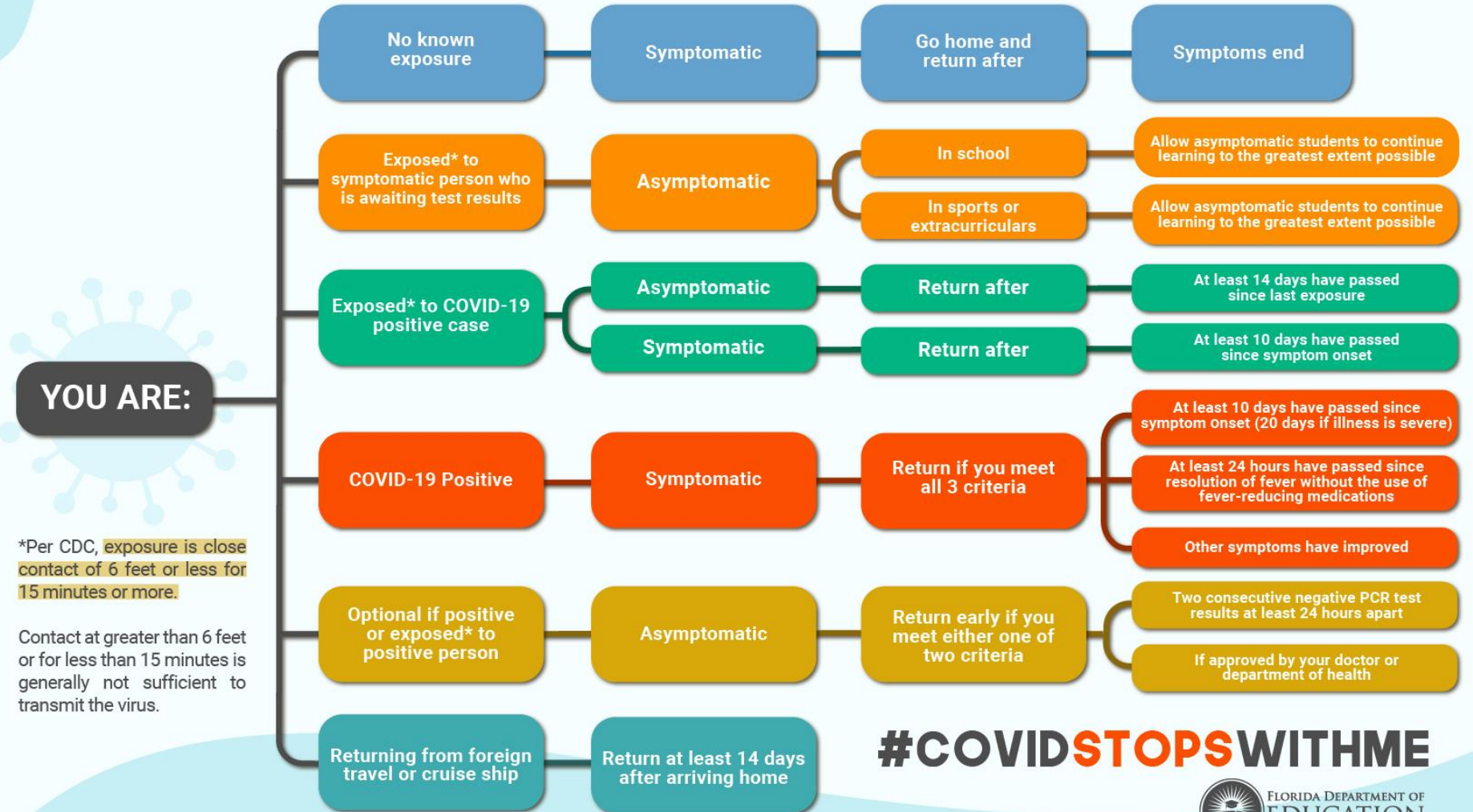


# IMPLEMENTING A SYMPTOM- BASED STRATEGY

# CORONAVIRUS

## SYMPTOMATIC DECISION TREE



\*Per CDC, exposure is close contact of 6 feet or less for 15 minutes or more.

Contact at greater than 6 feet or for less than 15 minutes is generally not sufficient to transmit the virus.

#COVIDSTOPSWITHME