

How to register your password on a personal device with the FIM Self-Service Registration Site

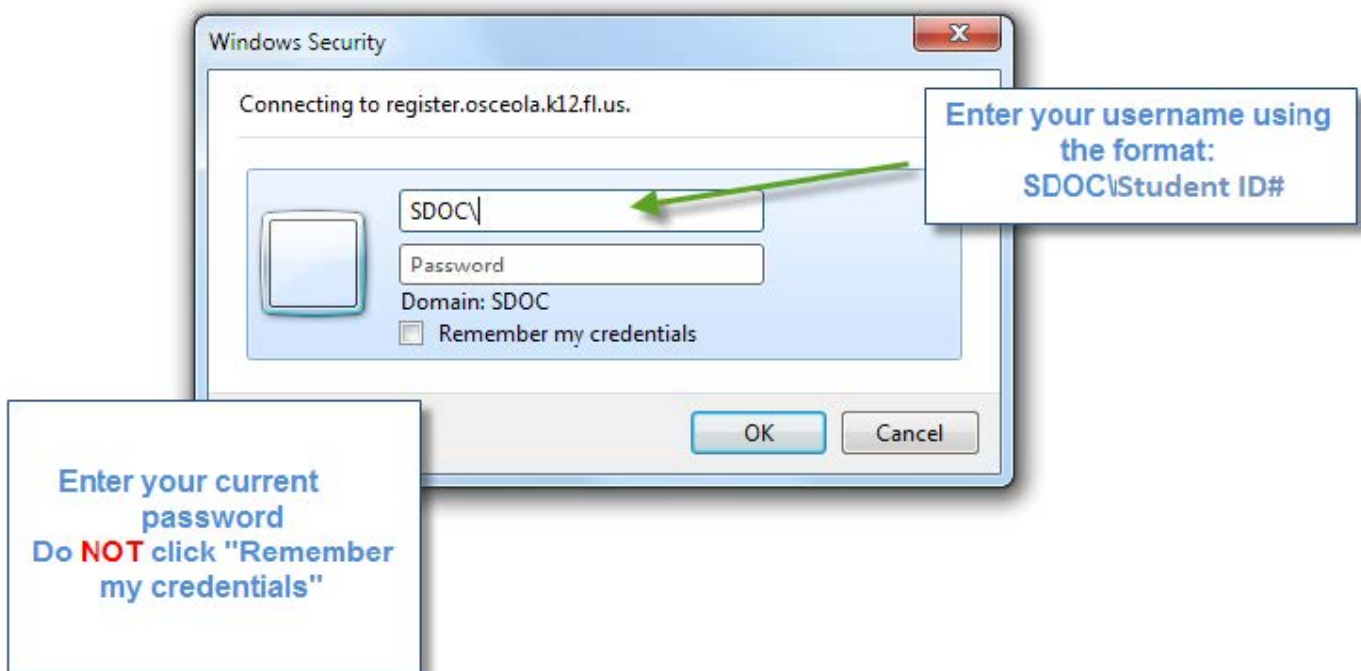
FIM Self-Service Password Registration

Non District Sites and External Networks

Using a web browser open the site:

<https://register.osceola.k12.fl.us>

A pop-up window similar to what you see below will appear (will vary slightly depending on your browser)

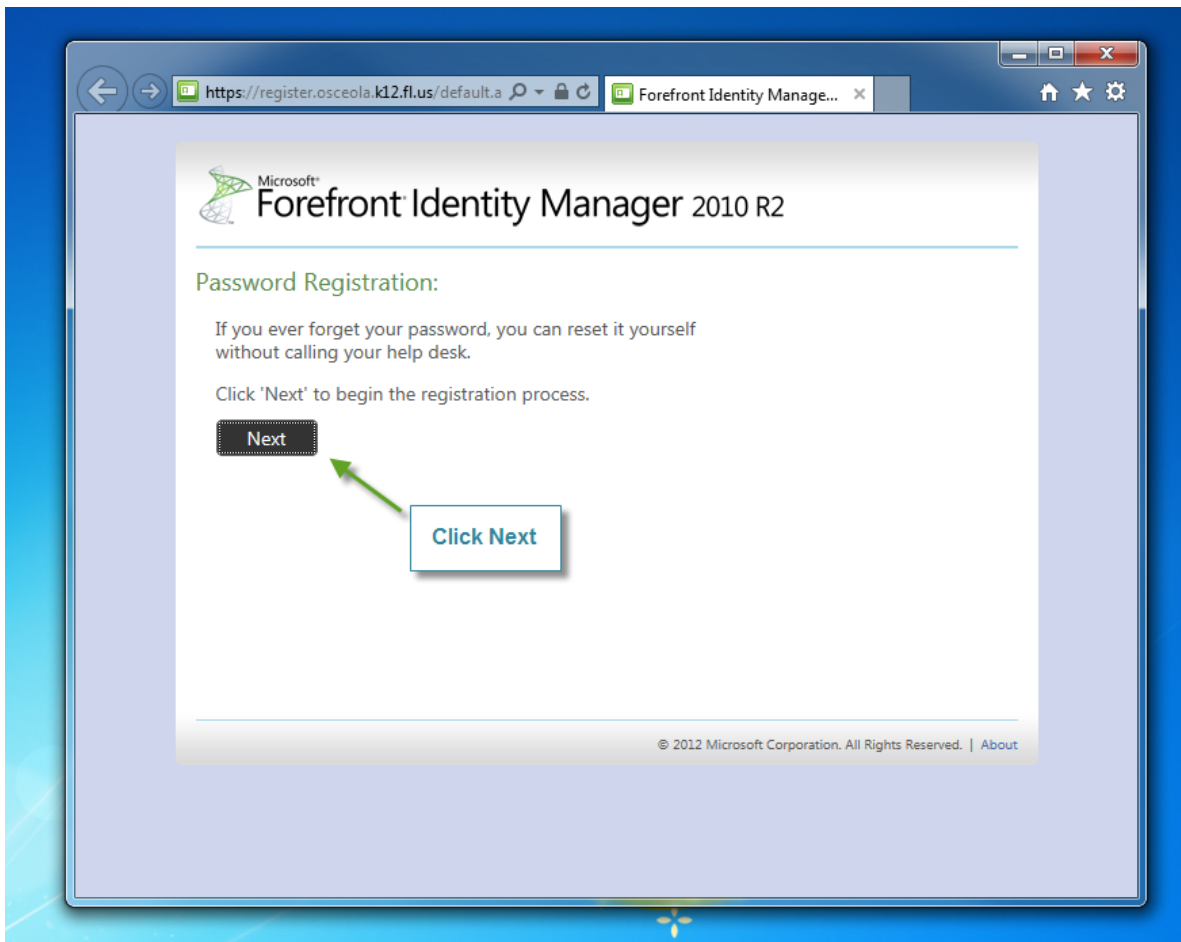


Your password must be in an enabled and a non-expired state to register for FIM Self Service Password Reset.

If your password has expired or has been forgotten, it will need to be reset before registering.

Contact your School Tech to reset your password before proceeding with registering in FIM.

If your School Tech is not available, please contact the District Help Desk at 407-870-4037



Note: The entire process must be completed within 20 minutes or the registration process will timeout.

https://register.osceola.k12.fl.us/default.aspx

Forefront Identity Manage...

Microsoft
Forefront Identity Manager 2010 R2

Password Registration: Your Current Password

Enter your current password below, then click 'Next'.
(logged in as: SDOC\psmrag)

Enter your current password and click Next

Next Cancel

© 2012 Microsoft Corporation. All Rights Reserved. | About

Microsoft
Forefront Identity Manager 2010 R2

Password Registration: Register Your Answers

You must answer at least 3 questions to register.

Each answer must contain at least three characters, and no two answers may be the same.

What's your mother's maiden name?

What city were you born in?

What's your favorite activity?

**Answer all 3 security questions
(Note requirements highlighted)**

The responses you provide are stored by your organization in Forefront Identity Manager.

Next Cancel

© 2012 Microsoft Corporation. All Rights Reserved. | About



Microsoft®

Forefront Identity Manager 2010 R2

Password Registration: Register Your Answers



Loading ...

This screen will appear and may take 10-15 seconds

© 2012 Microsoft Corporation. All Rights Reserved. | [About](#)



Microsoft®

Forefront Identity Manager 2010 R2

Completed: You are now registered



If you ever need to reset your password:

1. Go to the reset password portal
2. Verify your identity
3. Choose your new password

Once you see this screen, you are registered and can close the browser

© 2012 Microsoft Corporation. All Rights Reserved. | [About](#)

This process may be repeated at any time should you need to change the answers to your questions.