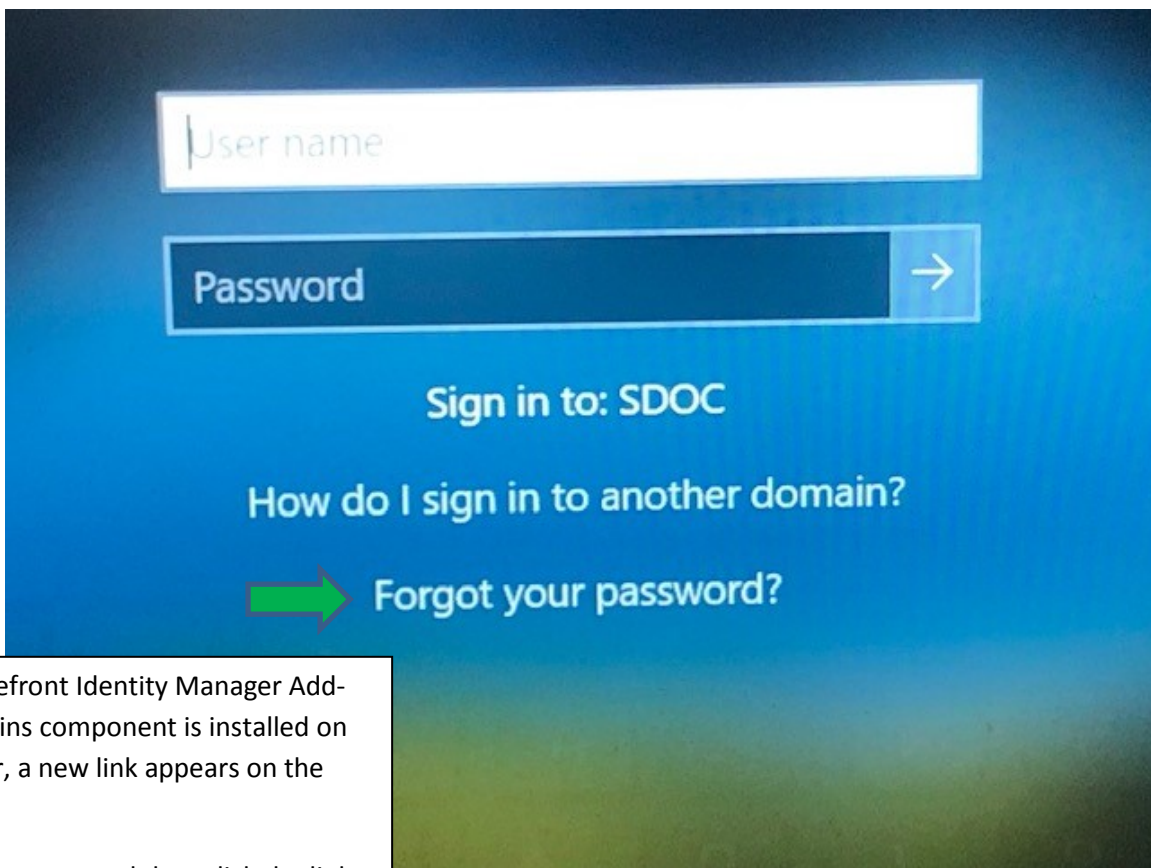


How to reset your password on a District provided device after registering with the FIM Self Service Password Reset Site

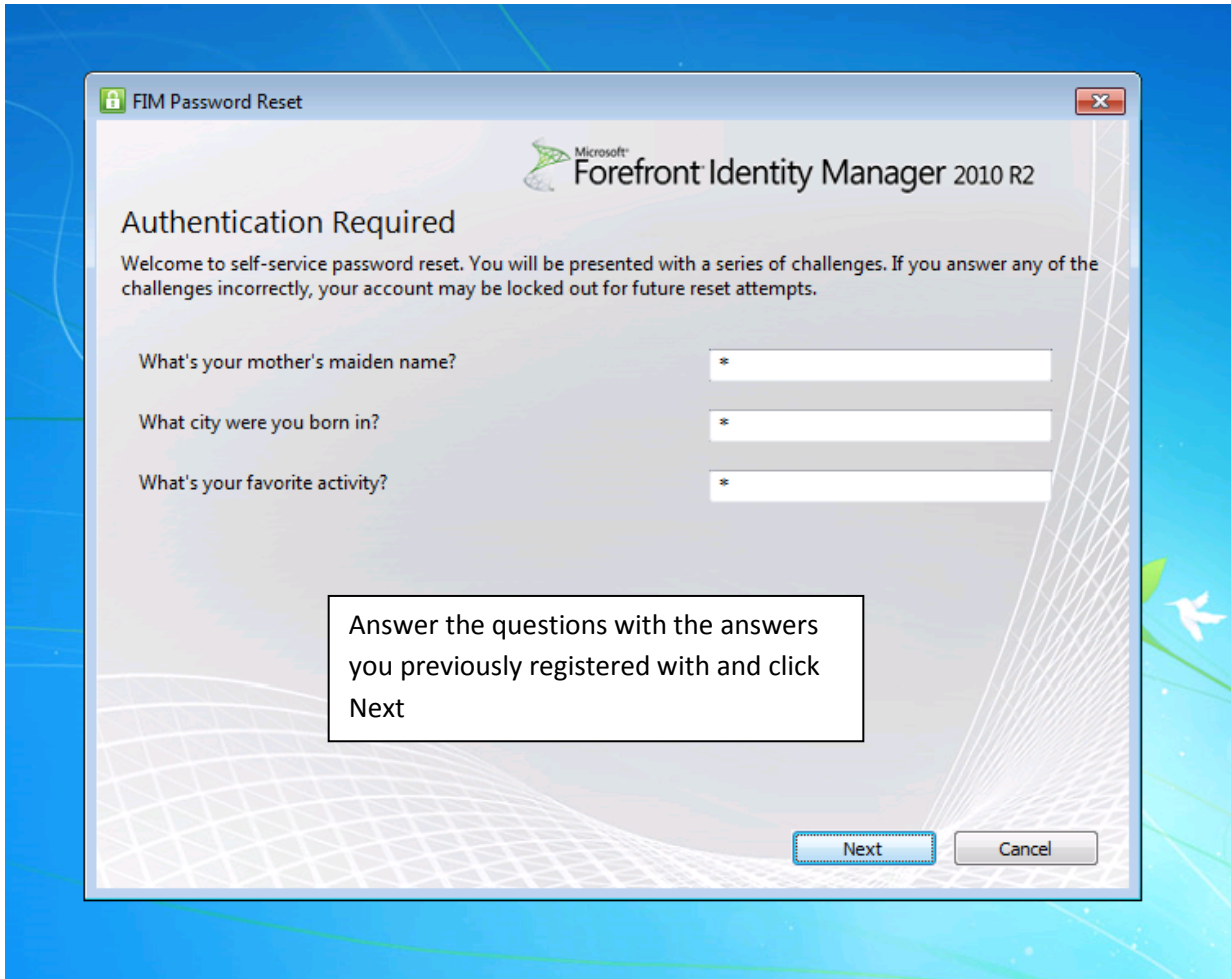
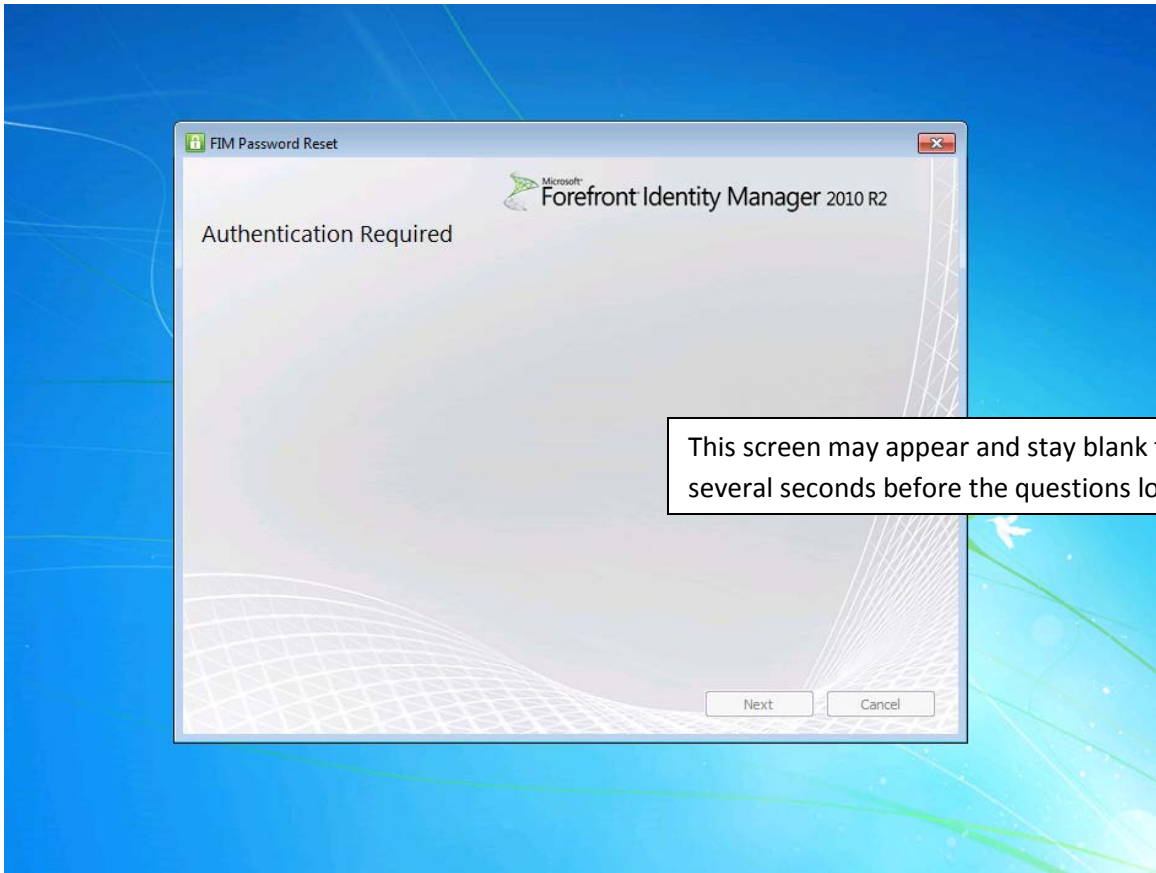
FIM Self Service Password Reset

Domain Joined Computer



Once the Forefront Identity Manager Add-ins and Snap-ins component is installed on the computer, a new link appears on the logon screen.

Type your username and then click the link "Forgot your password?"



FIM Password Reset

Microsoft
Forefront Identity Manager 2010 R2

Authentication Required

Welcome to self-service password reset. You will be presented with a series of challenges. If you answer any of the challenges incorrectly, your account may be locked out for future reset attempts.

What's your mother's maiden name? *

What city were you born in

What's your favorite activity

FIM Password Reset
Processing...

Next Cancel

FIM Password Reset

Microsoft
Forefront Identity Manager 2010 R2

Enter Your New Password

Domain\Username: SDOC\

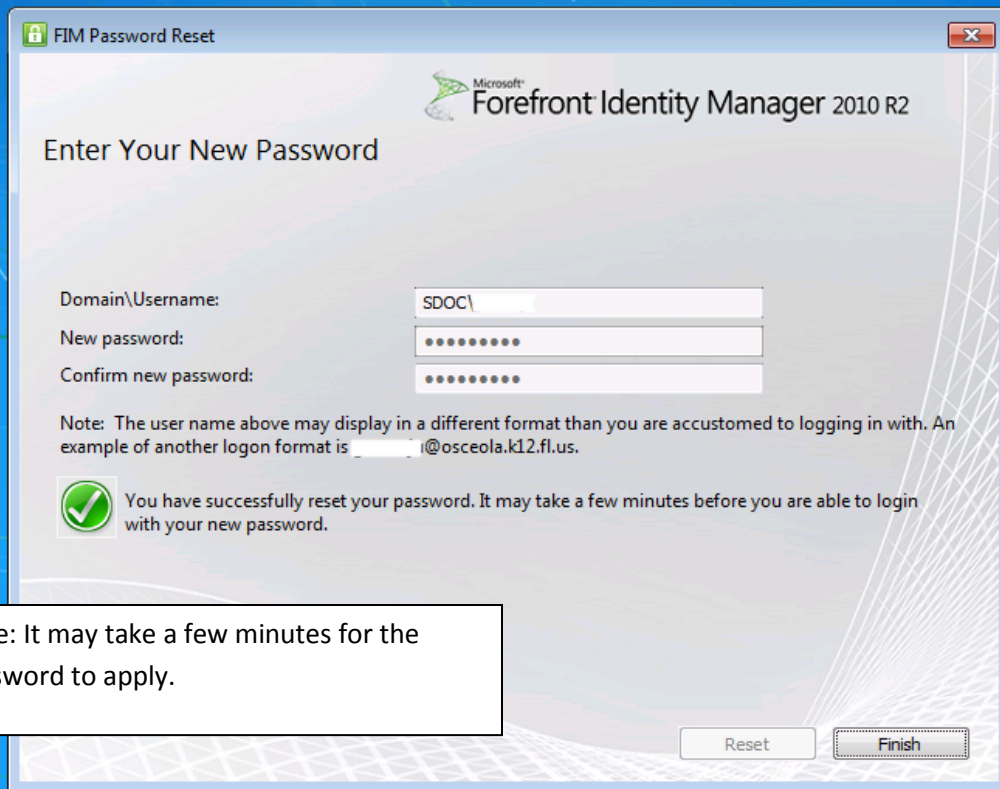
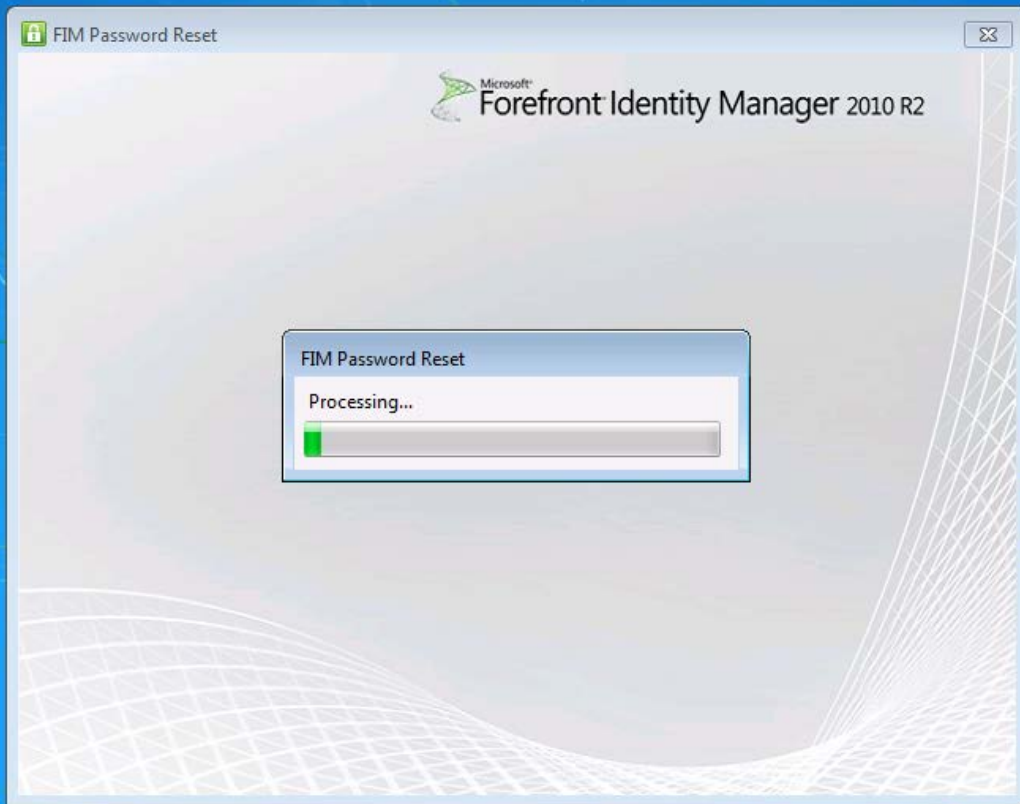
New password:

Confirm new password:

Note: The user name above may display in a different format than you are accustomed to logging in with. An example of another logon format is @osceola.k12.fl.us.

Reset Cancel

Enter the new password in both boxes and click Reset. If the passwords do not match in both boxes or does not meet the complexity requirements, an error box will appear and the process will need to be restarted



Note: It may take a few minutes for the password to apply.